

## How to setup a Serial Bluetooth adapter

Setup Guide for part numbers S2B2232I and S2B2232E

---

<a href="#">Pairing the serial Bluetooth adapter with your computer .....</a>	<a href="#">2</a>
<a href="#">Pairing with Windows 10 .....</a>	<a href="#">2</a>
<a href="#">Pairing with older Windows 10 versions .....</a>	<a href="#">11</a>
<a href="#">Pairing with Windows 8.1 .....</a>	<a href="#">16</a>
<a href="#">Pairing with Windows Vista, 7 and 8.....</a>	<a href="#">24</a>
<a href="#">Pairing with Windows XP or older .....</a>	<a href="#">31</a>
<a href="#">Configuring the parameters .....</a>	<a href="#">39</a>
<a href="#">Configuring the parameters through the serial interface .....</a>	<a href="#">39</a>
<a href="#">Configuring the parameters over Bluetooth .....</a>	<a href="#">43</a>
<a href="#">Making a loop-back test to verify communication .....</a>	<a href="#">47</a>
<a href="#">Installing drivers for a USB Bluetooth dongle .....</a>	<a href="#">51</a>
<a href="#">Pairing with another Serial Bluetooth Adapter .....</a>	<a href="#">54</a>
<a href="#">Enabling the DIP switches .....</a>	<a href="#">58</a>
<a href="#">Changing the COM port number .....</a>	<a href="#">59</a>
<a href="#">Resetting the serial Bluetooth adapter .....</a>	<a href="#">62</a>
<a href="#">Pairing the Bluetooth Adapter with your Android device .....</a>	<a href="#">62</a>
<a href="#">Questions and Answers .....</a>	<a href="#">65</a>
<a href="#">Known Issues .....</a>	<a href="#">70</a>

## Pairing the serial Bluetooth adapter with your computer.

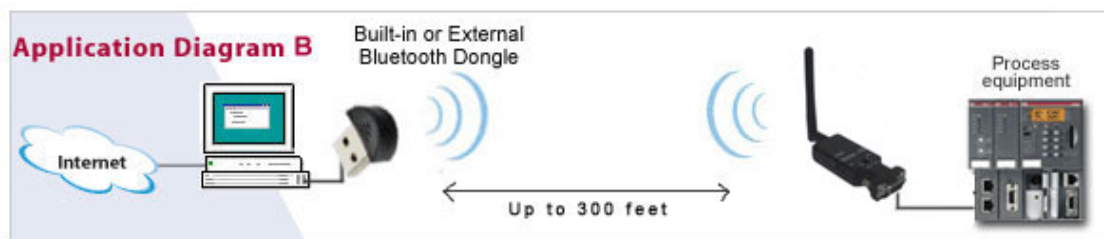
To be able to communicate with the serial Bluetooth adapter you need to first pair it with your computer.

Our serial Bluetooth adapters part S2B2232I and S2B2232E can be paired with your computer using Windows built-in Bluetooth drivers, if you are using Windows Vista, Windows 7, Windows 8 / 8.1, Windows 10 or higher.

If you are using Windows XP or lower you need to use a 3<sup>rd</sup> party Bluetooth management software such as BlueSoleil.

The pairing procedure is shown below for Windows 10, 8.1, 8, 7, Vista and XP.

### Pairing with Windows 10.



Make sure Windows Bluetooth Manager is running on your computer. If there is a Bluetooth icon in the lower right-side task bar then the Bluetooth Manager is already running.

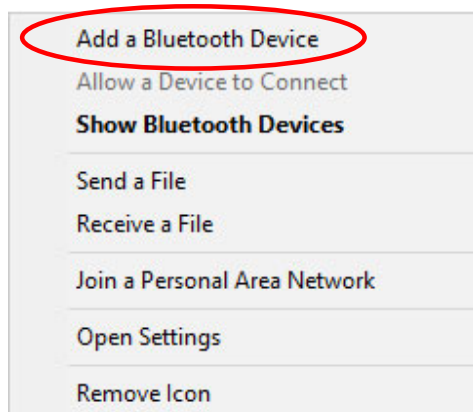
If there is no Bluetooth icon then start the Bluetooth Manager by entering the word "Bluetooth" in the start menu and click the Bluetooth link that shows up. This will start Windows default Bluetooth management software (if this has successfully been installed on your computer and if your computer has Bluetooth).

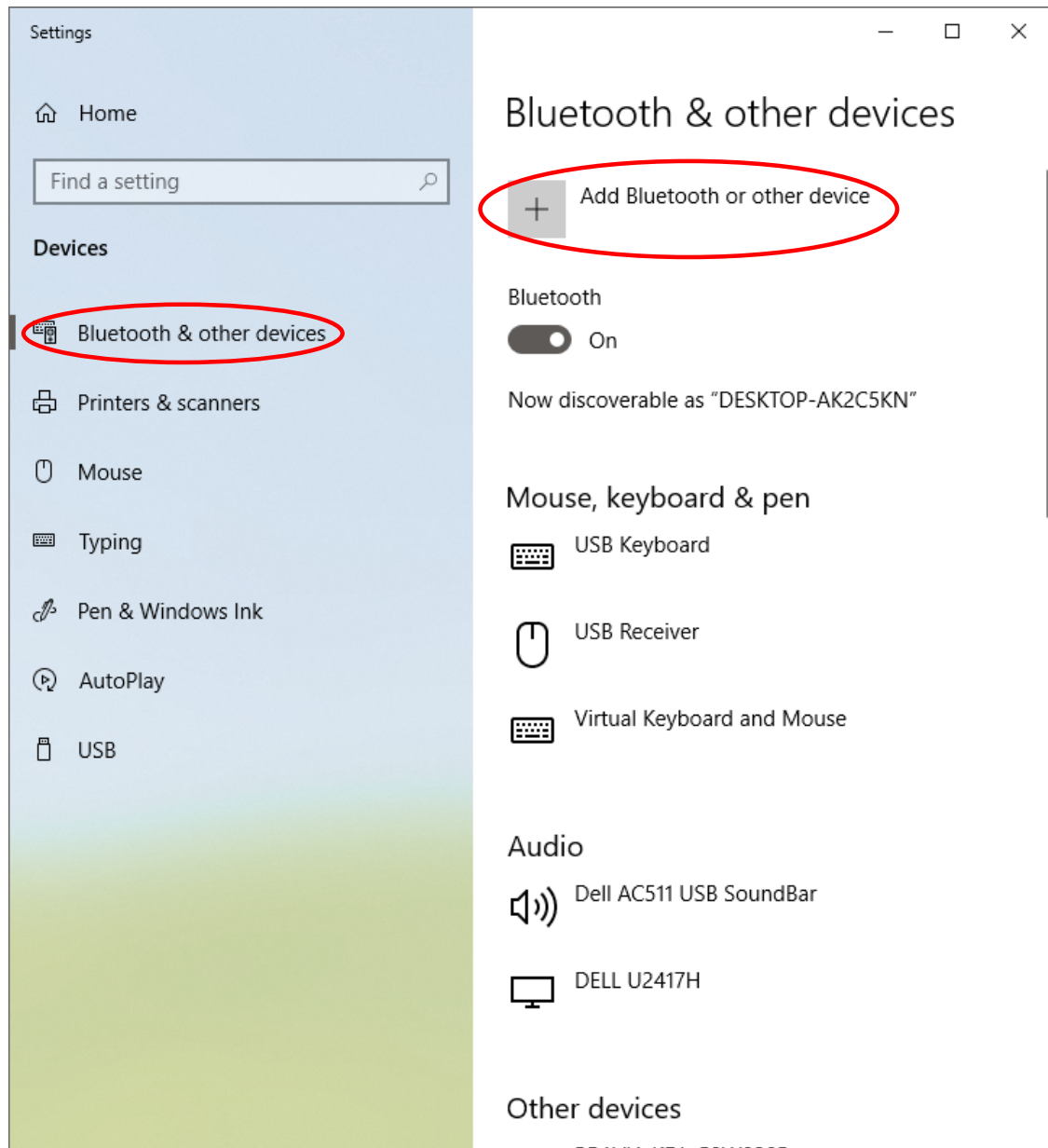
If your computer does not have built-in Bluetooth then you can use any standard USB Bluetooth dongle to Bluetooth enable your computer.

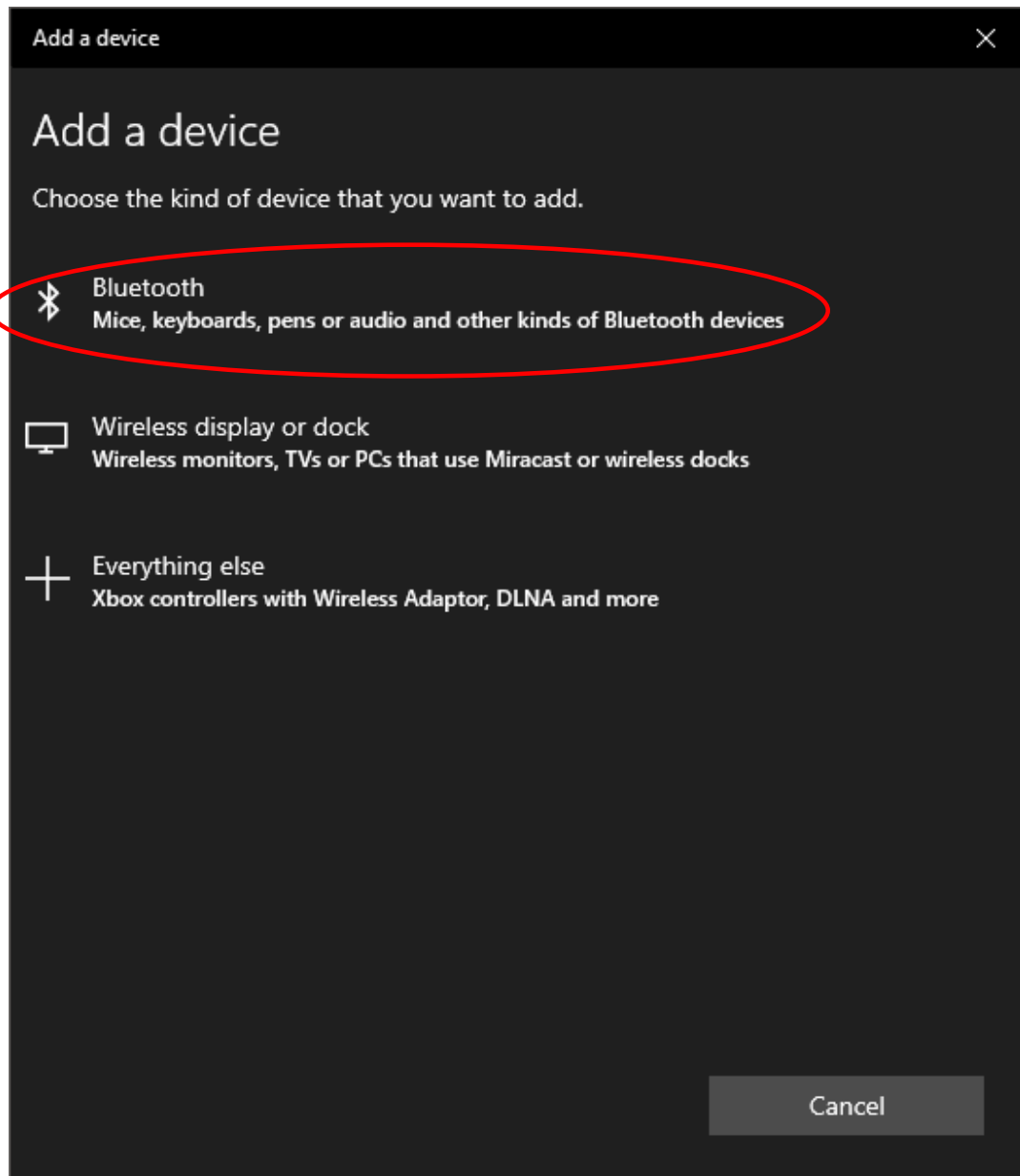
Click the Bluetooth icon in the lower right-side task bar:

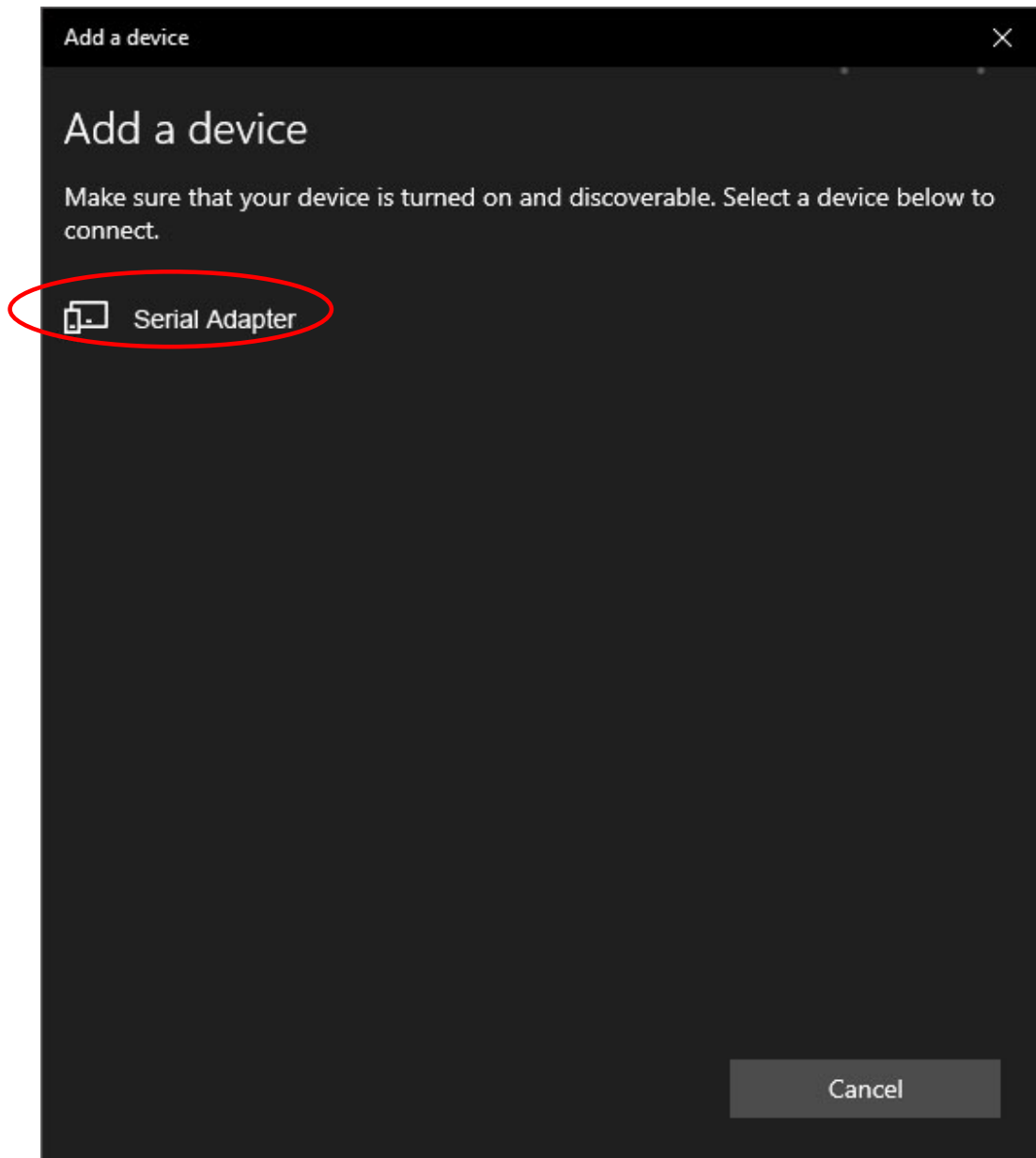


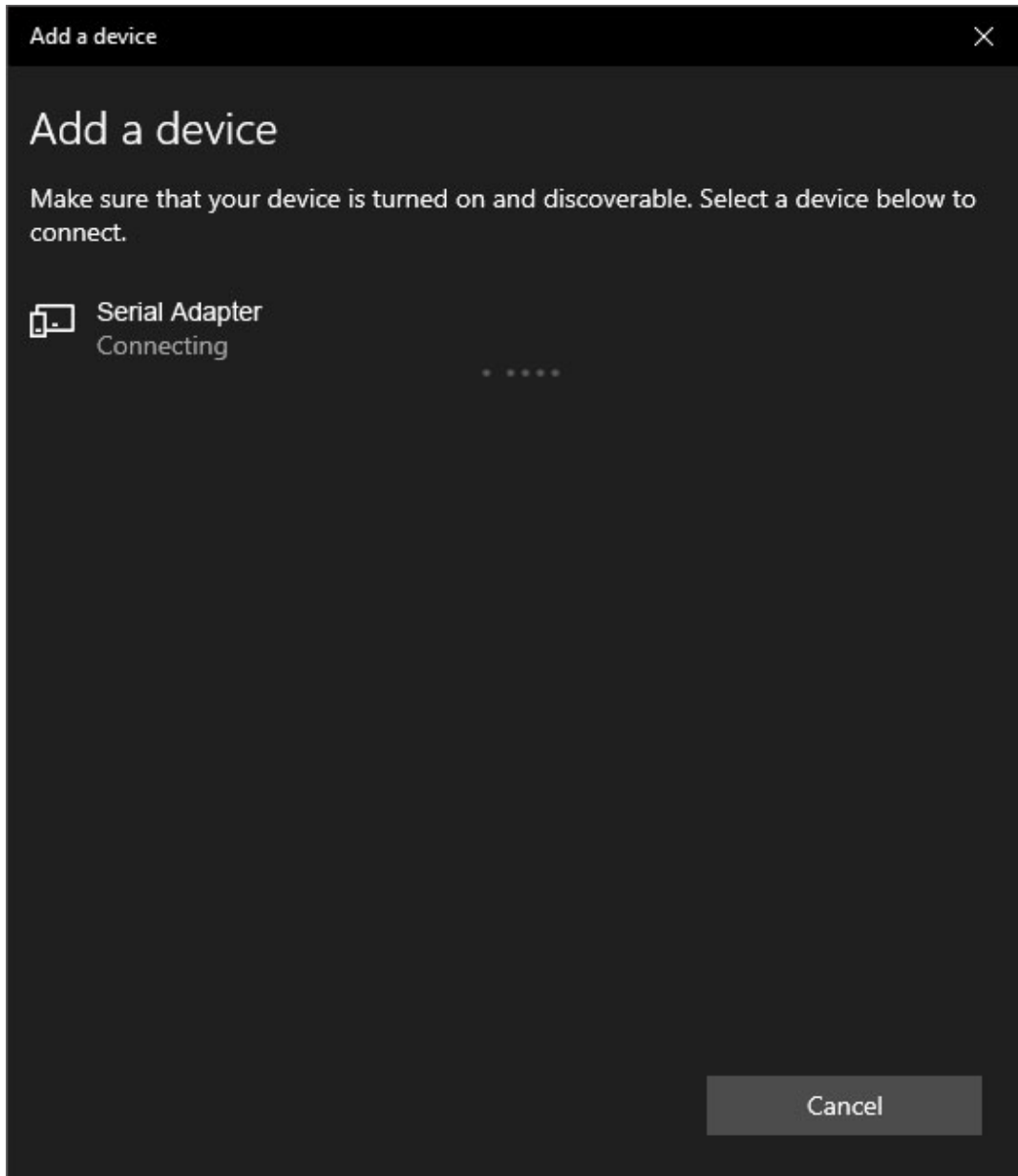
and click "Add a Bluetooth Device" in the menu:

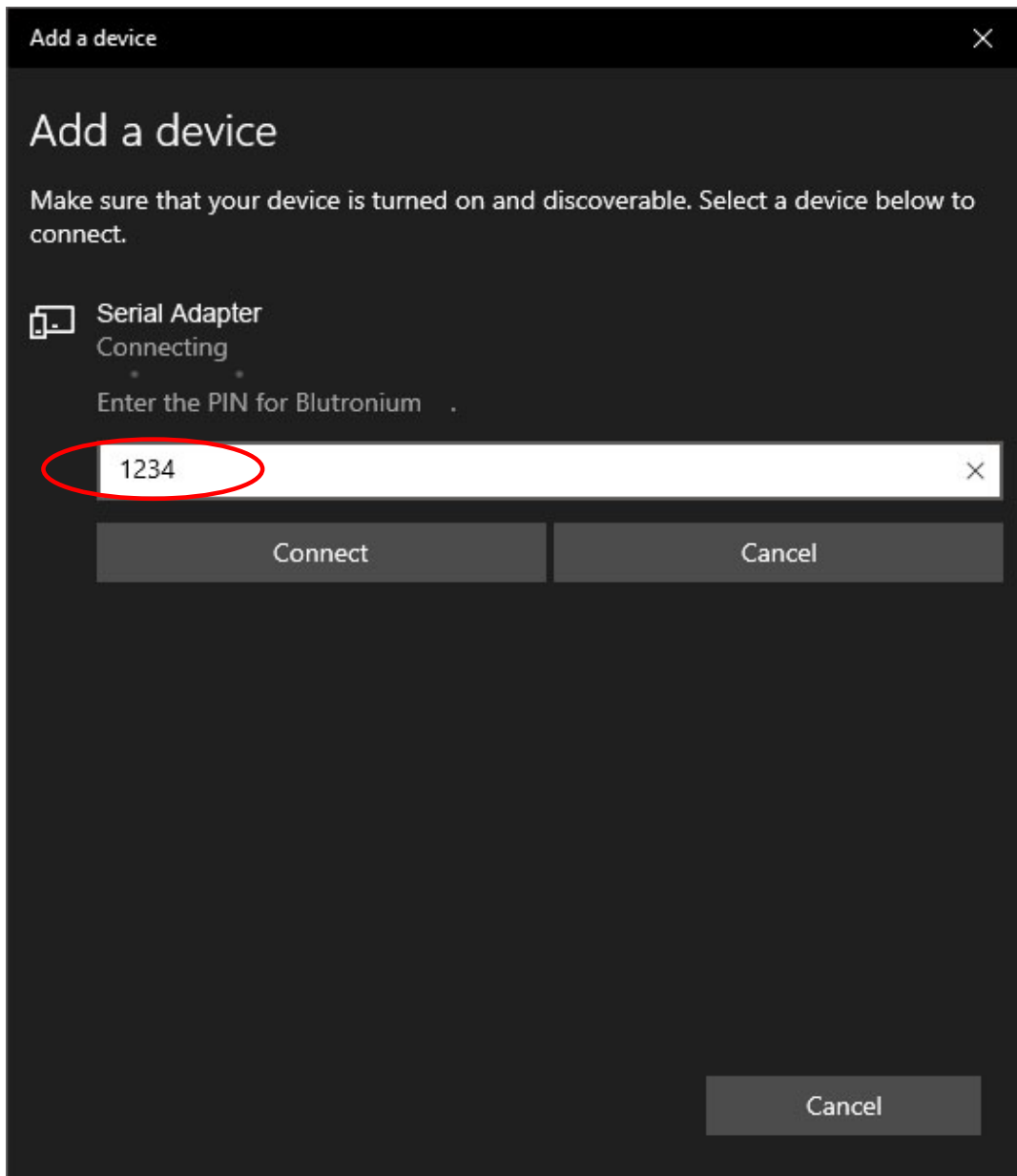


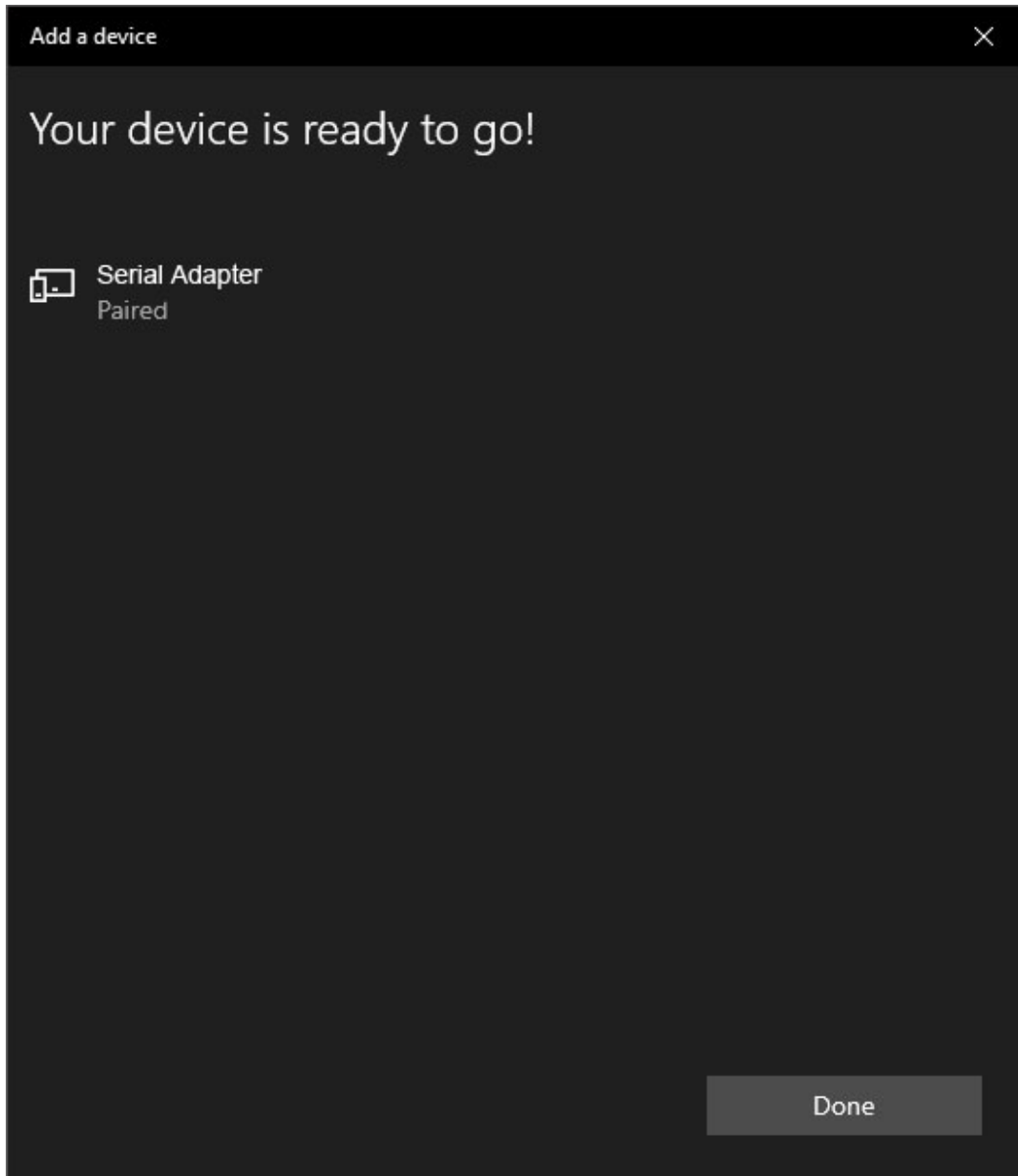








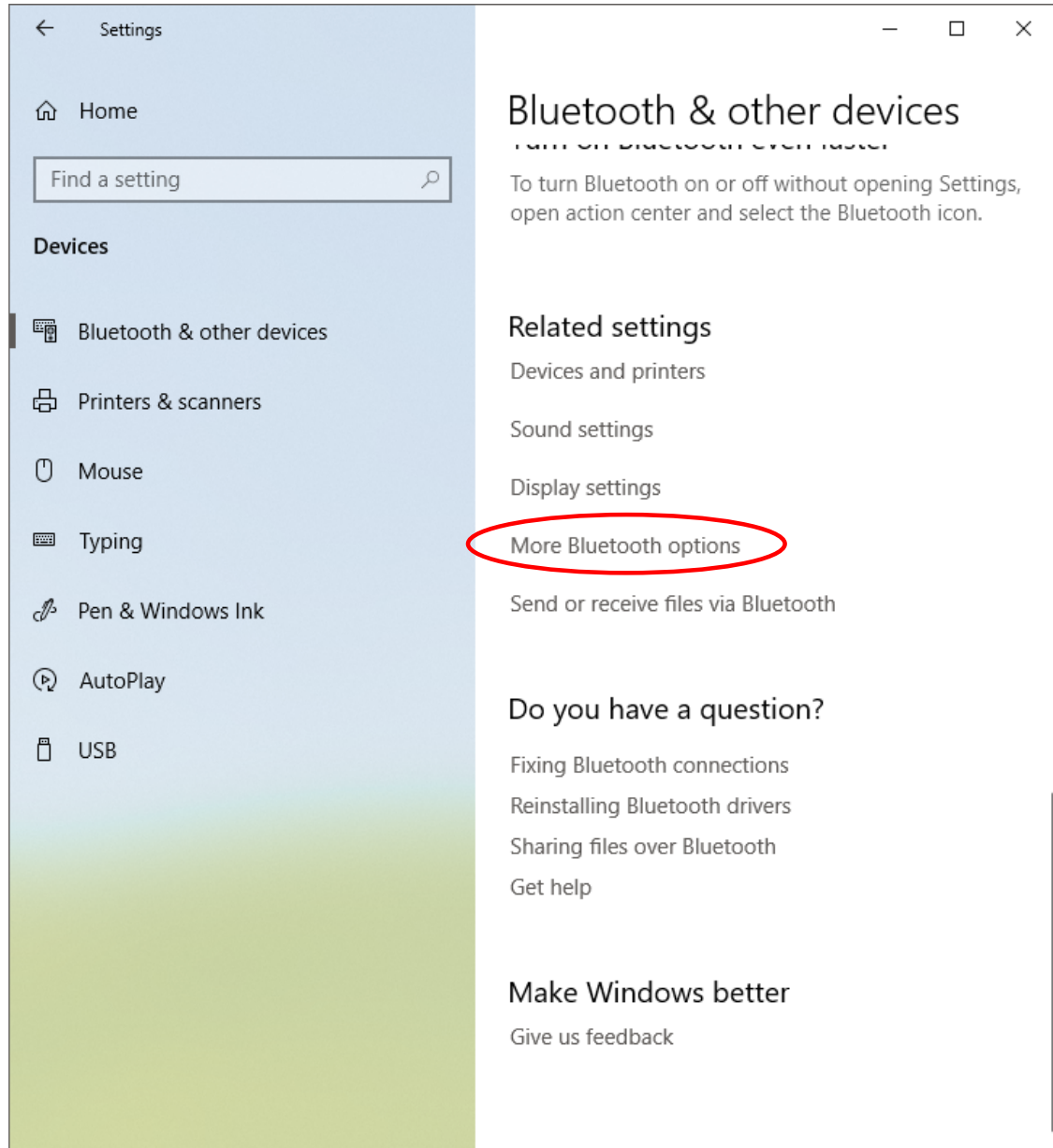




NOTICE: The 'Status' LED light on the serial adapter will still blink even the adapter is paired with Windows. This is normal. The 'Status' LED light does not get steady ON until the COM port is opened.

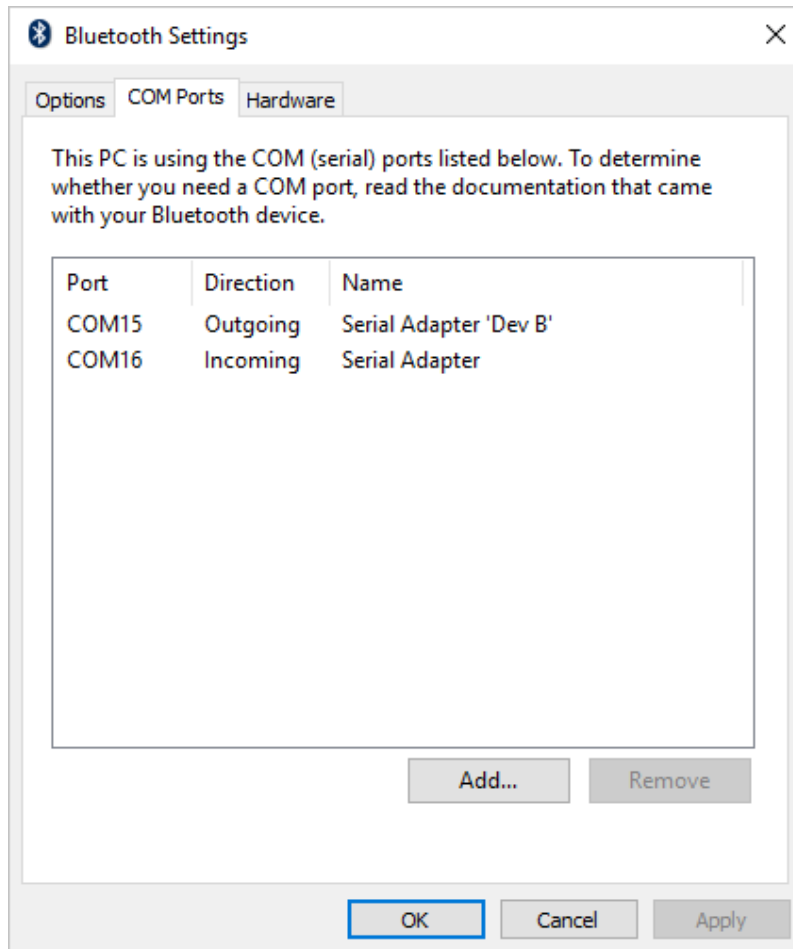


Assuming that the Serial Adapter has been successfully installed, click the Bluetooth icon in the Windows task bar and chose "Open Settings". Go to the bottom of the window and select "More Bluetooth options":



Click the 'COM Ports' tab to see which COM port number has been assigned to the adapter.

In this case COM port number 15 and 16 has been assigned by Windows. Windows assigns an incoming and an outgoing port. To simplify things; COM15 is the main port which we will use for our communication. You do not need to worry about incoming or outgoing ports as long as you identify which port is the main port. The main port in this case for the Serial Adapter is indicated as "Dev B" as shown below:



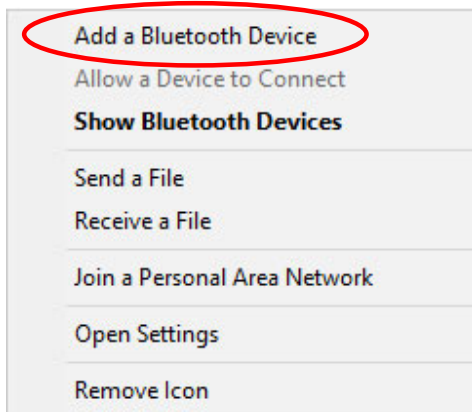
If you wish to change the COM port number then you can do so in Device Manager. Right-click the COM port listed under Ports (COM & LTP) in Device Manager and chose "Properties". Under the "Port Settings" tab click the "Advanced" button, you can here change several settings including the COM port number.

***Pairing with older versions of Windows 10:***

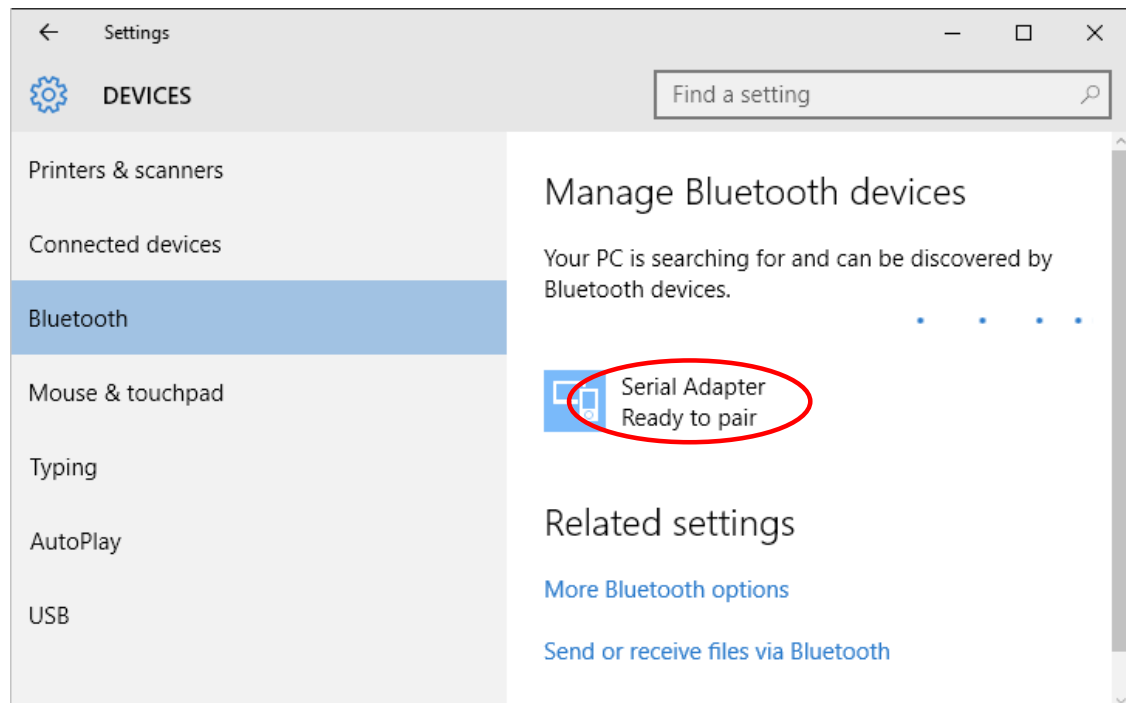
Click the Bluetooth icon in the lower right-side task bar:

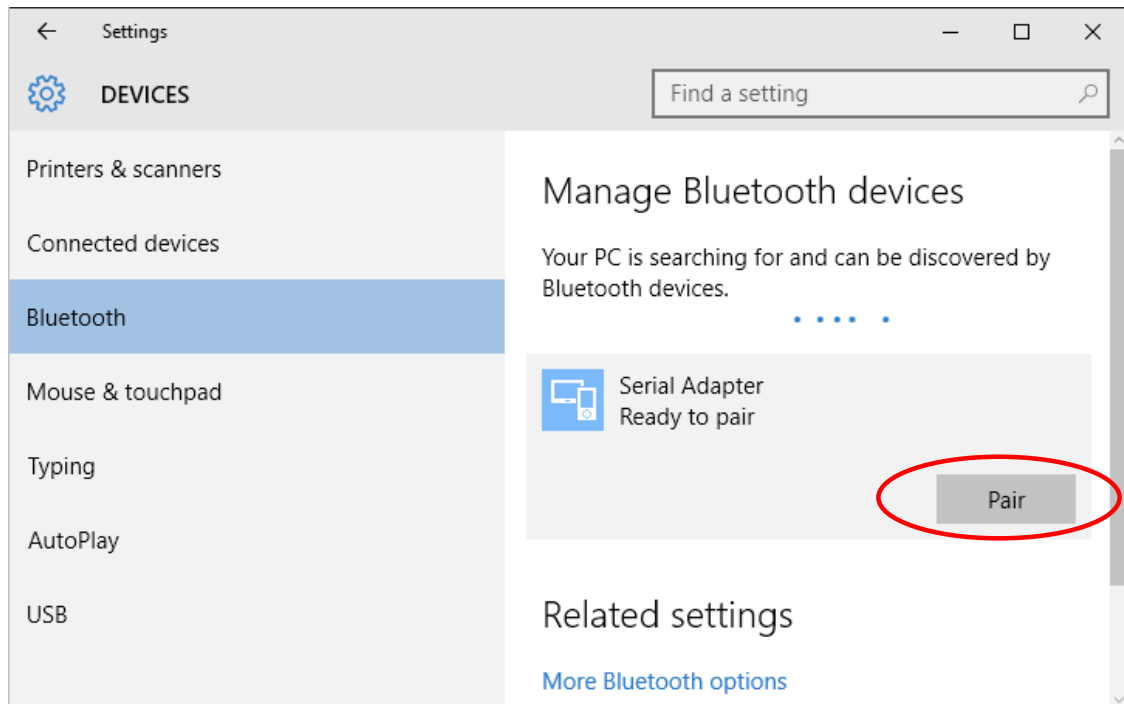


and click “Add a Bluetooth Device” in the menu:

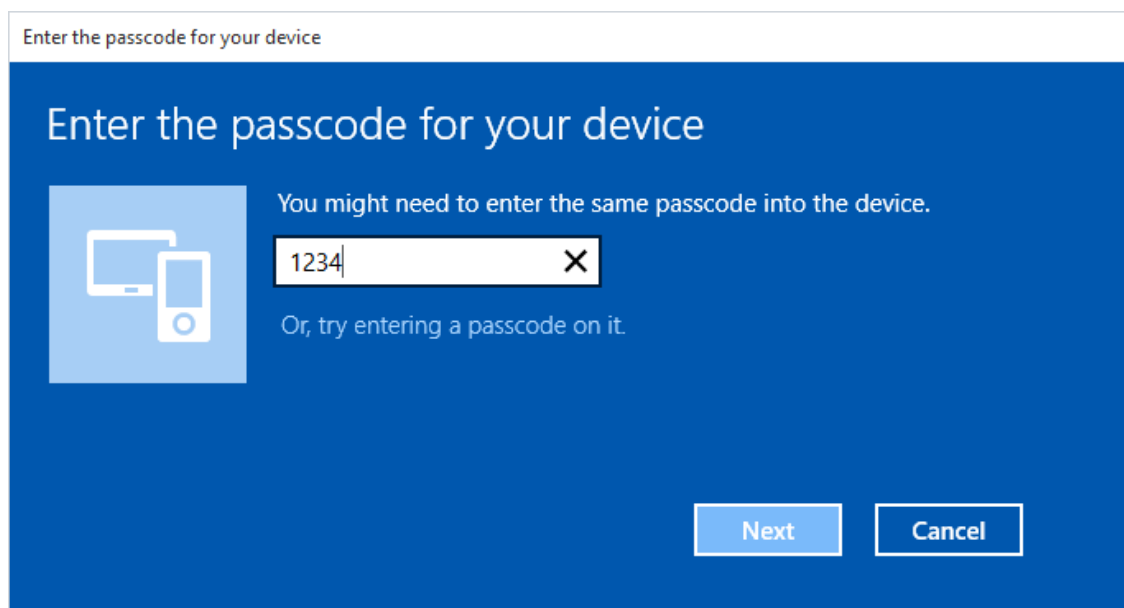


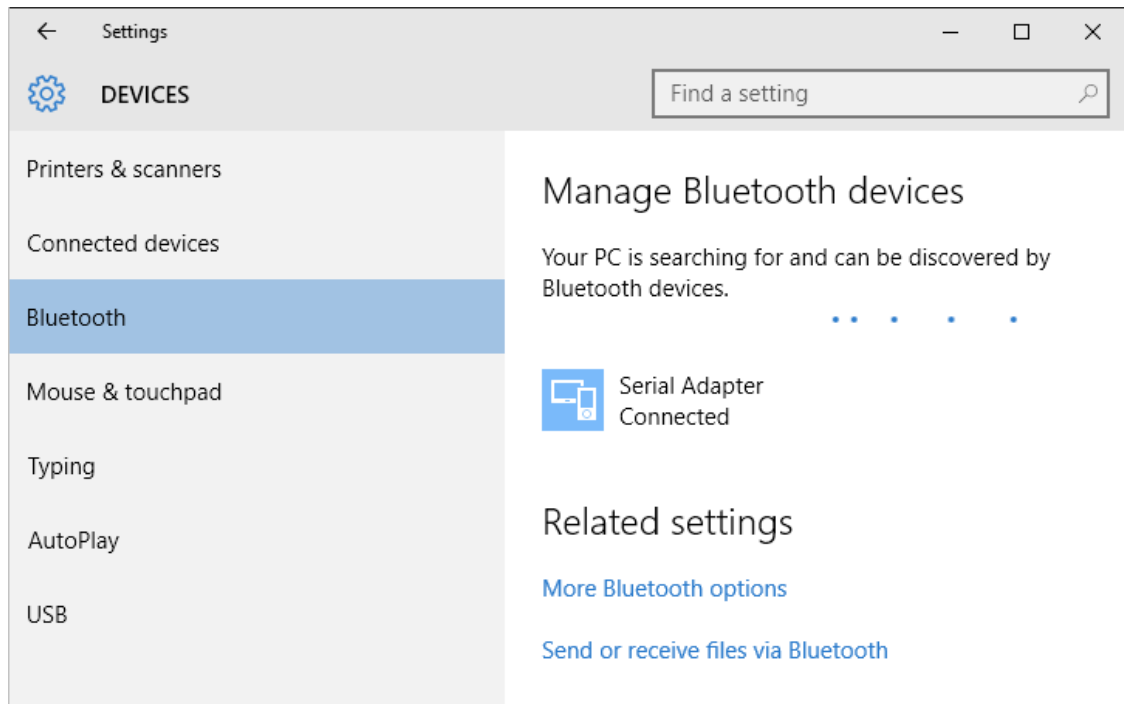
Turn on the serial Bluetooth adapter and Windows will find it:



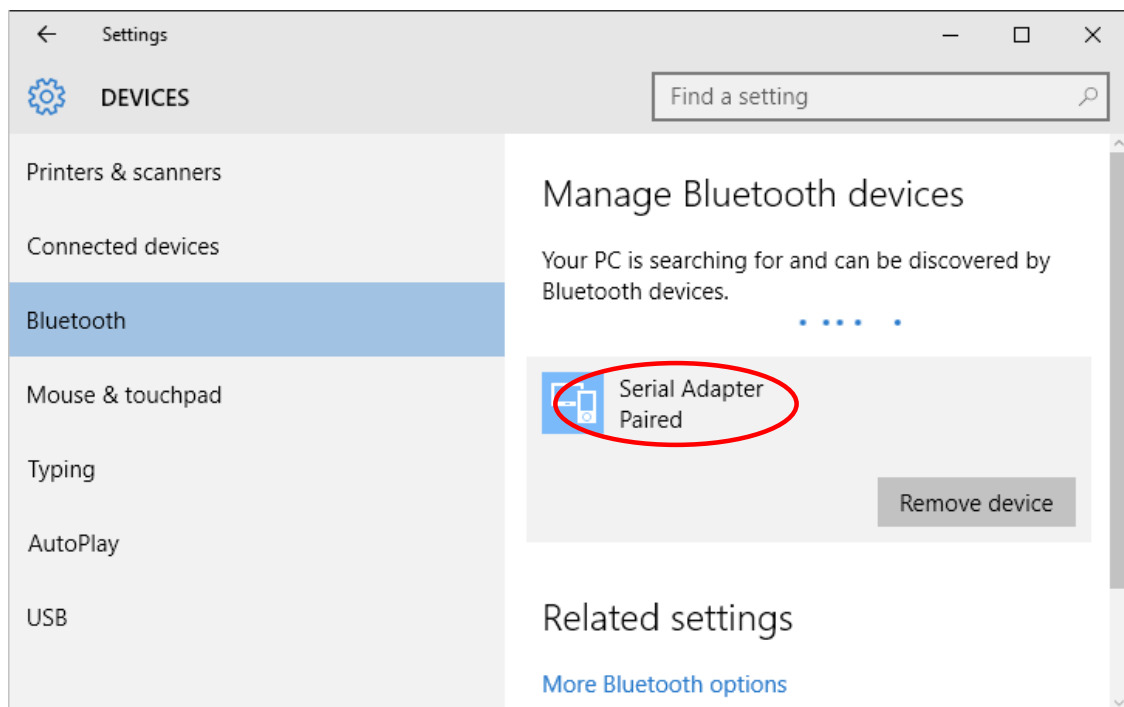


Enter the pairing code: 1234

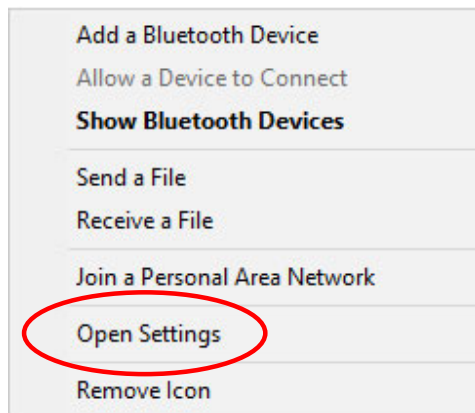




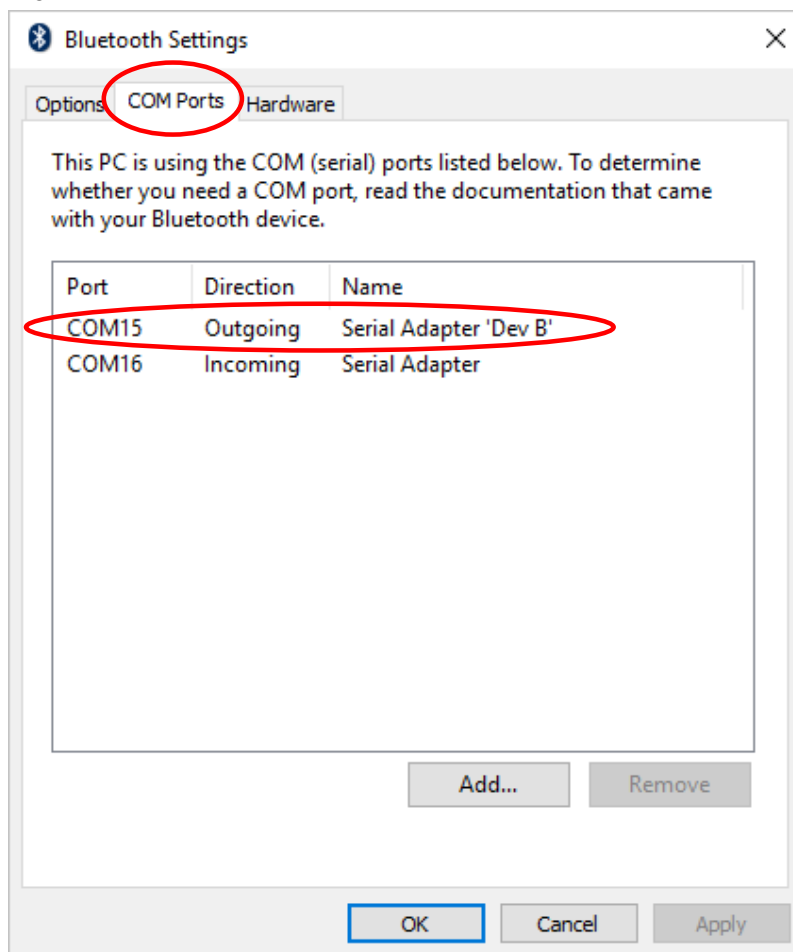
It is now paired / connected.



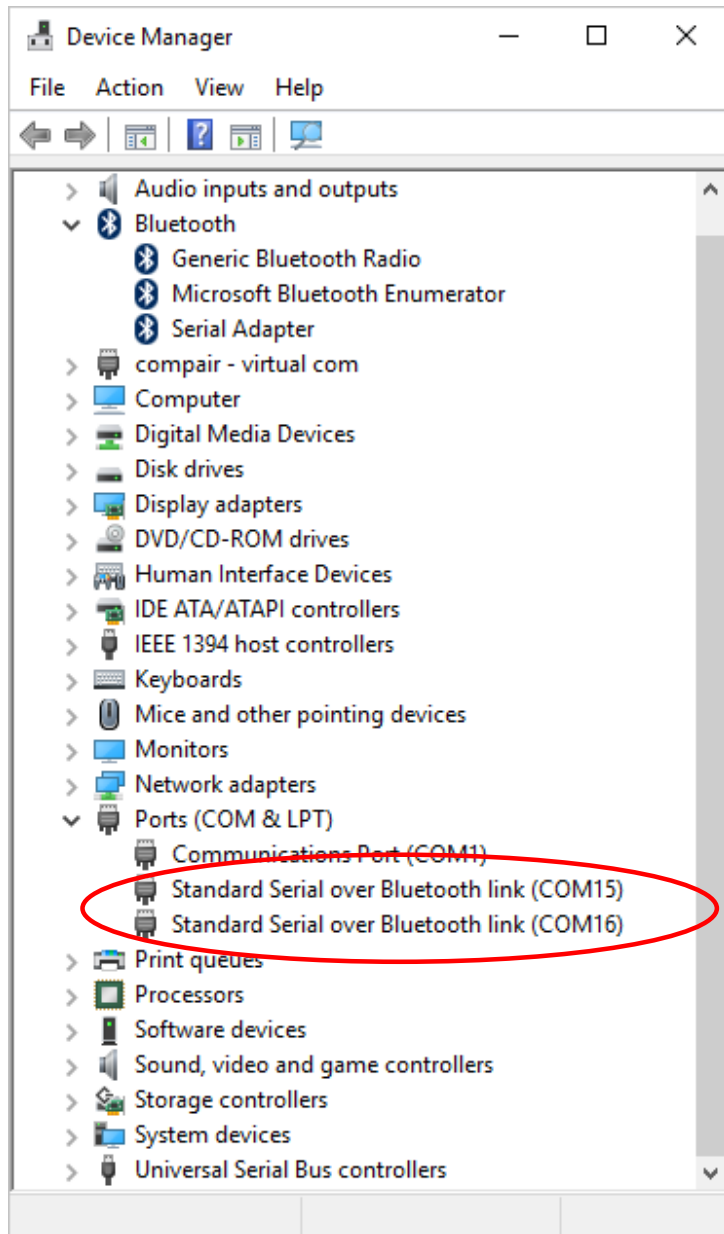
Assuming that the Serial Bluetooth Adapter has been successfully installed, click the Bluetooth icon in the Windows task bar and chose "Open Settings":



In the Bluetooth settings window you can now see the COM ports for the Serial Bluetooth Adapter. In this case COM port number 15 and 16 have been assigned by Windows. Windows assigns an incoming and an outgoing port. To simplify things; COM15 is the main port which we will use for our communication. You do not need to worry about incoming or outgoing ports as long as you identify which port is the main port. The main port in this case for the adapter is indicated as "Dev B" as shown below:



If you wish to change the COM port number from COM15 to for Example COM5 then you can do so in Device Manager. Right-click the COM port listed under Ports (COM & LPT) in Device Manager and chose “Properties”. Under the “Port Settings” tab click the “Advanced” button, you can here change several settings including the COM port number.



You are now ready to configure the adapter's parameters. Jump to the section called "[Configuring the parameters](#)".

**Pairing with Windows 8.1 64-bit**

(Tested in Oracle VM VirtualBox version 4.3.6 r91406)

We are in this example using the S2B2232E serial Bluetooth adapter and the ES-388 USB Bluetooth dongle which has a CSR (Cambridge Silicon Radio 41B14) based chipset. Both are available from [www.usconverters.com](http://www.usconverters.com). We cannot guarantee same functionality if you are using a USB Bluetooth dongle with a different chipset.



UCBT232E  
Serial Bluetooth adapter

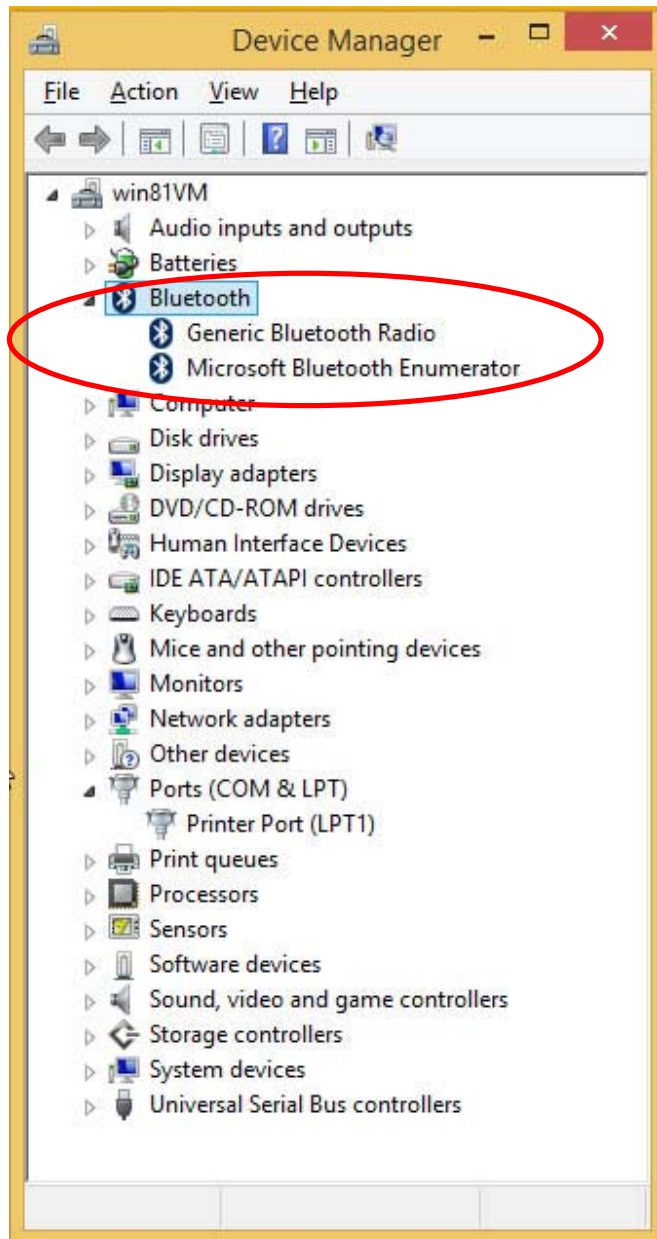


ES-388  
USB Bluetooth dongle

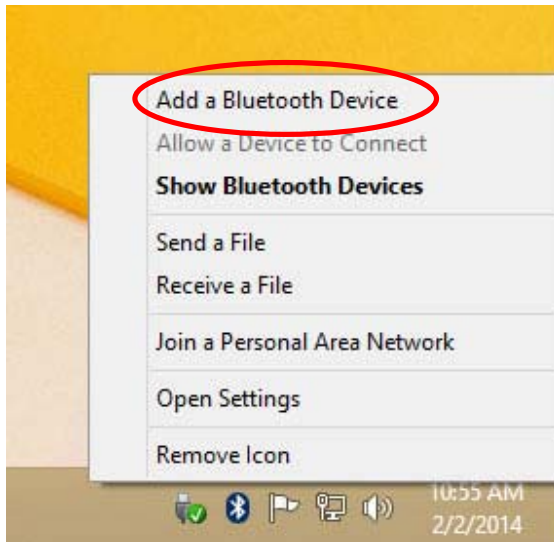
**If you want Bluetooth enable your PC**



Insert the USB Bluetooth dongle into your computer's USB port.  
Check in Device Manager that it is recognized by your computer.

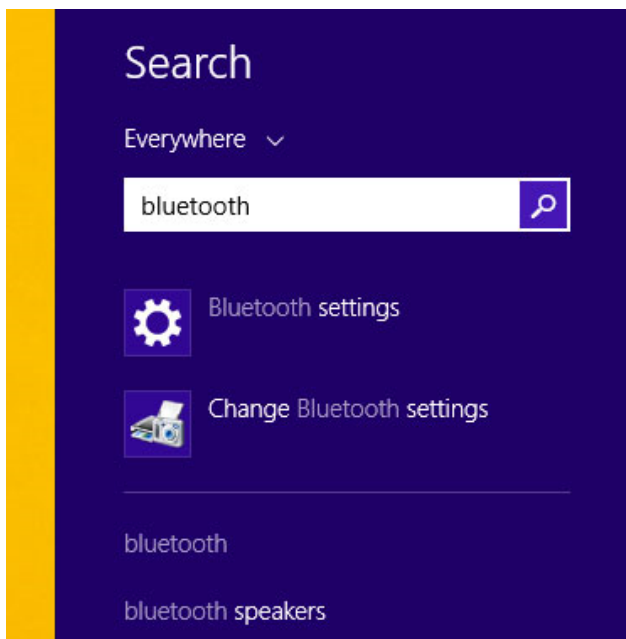


Click the Bluetooth icon in the lower task bar:

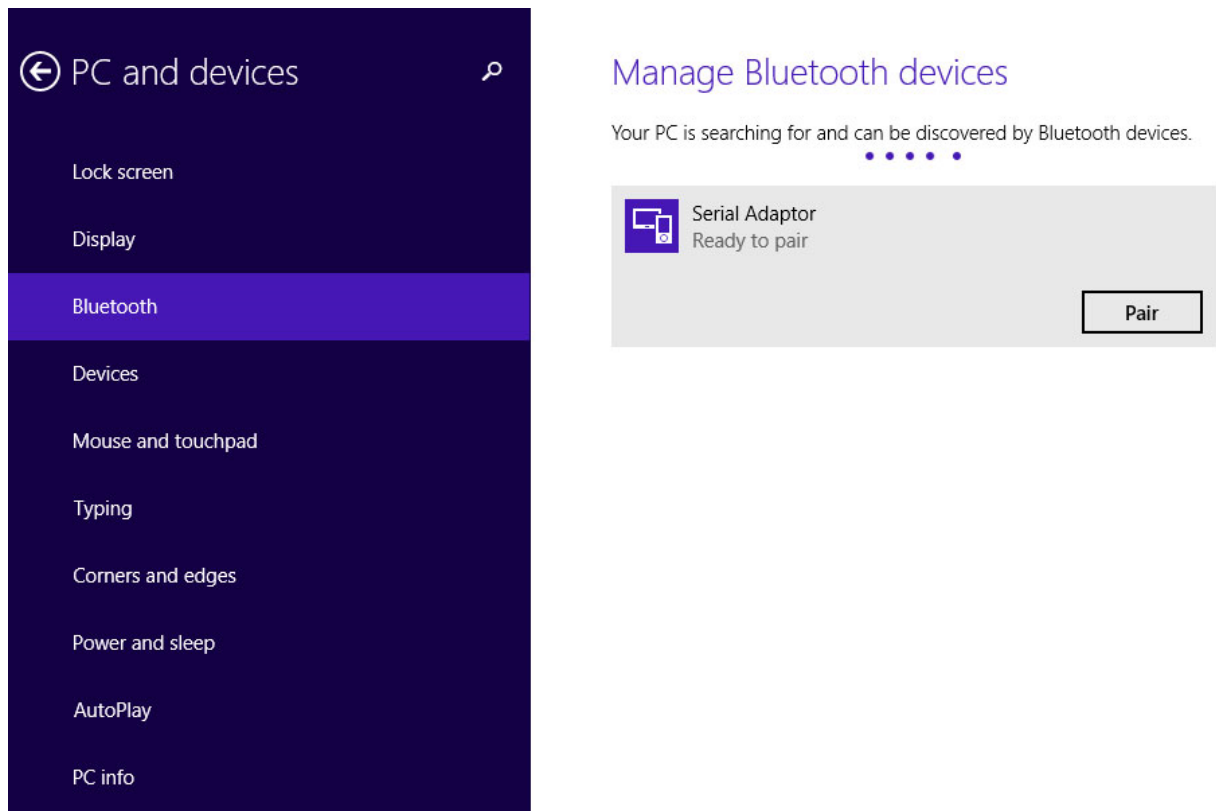


And select "Add a Bluetooth Device".

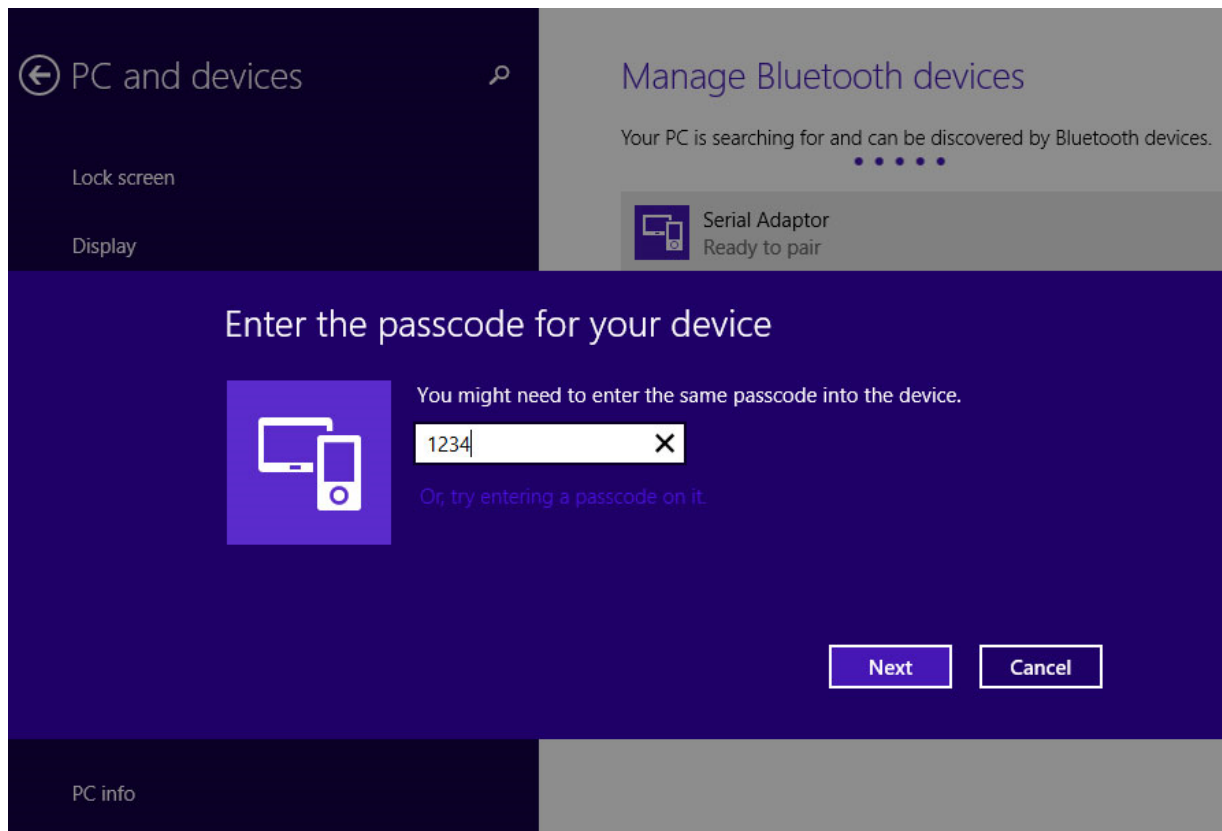
If for some reason the Bluetooth icon does not appear in the lower task bar, you can instead search for "Bluetooth" and select "Bluetooth settings":



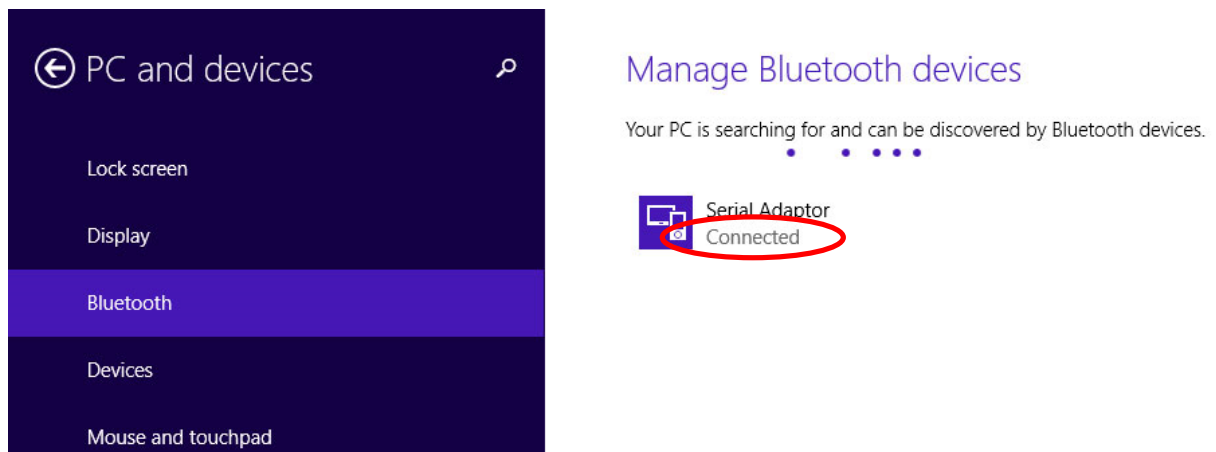
The Bluetooth management screen will open. Click the “Serial Adaptor” and click “Pair”:



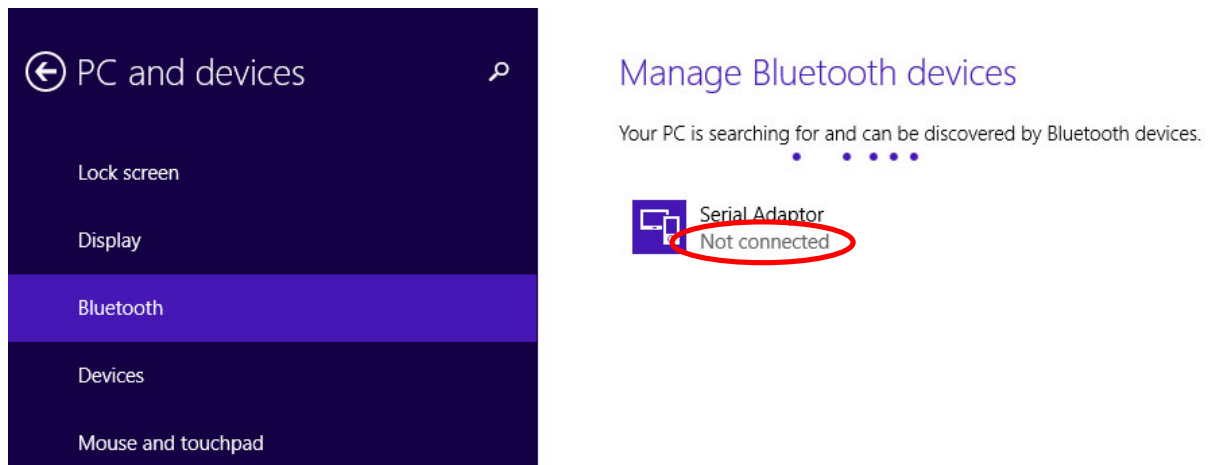
Enter the pairing code “1234” and click “Next”



Windows will now show that the serial adaptor is connected:

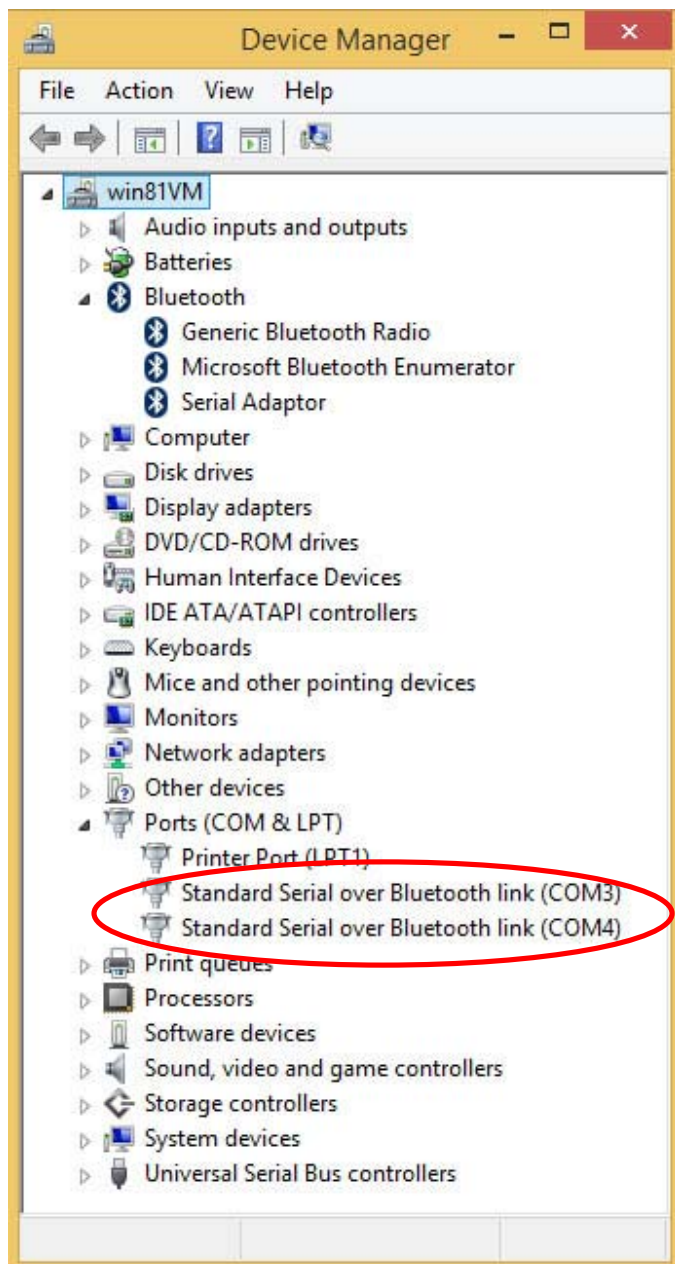


And after a few seconds it will show "Not connected":

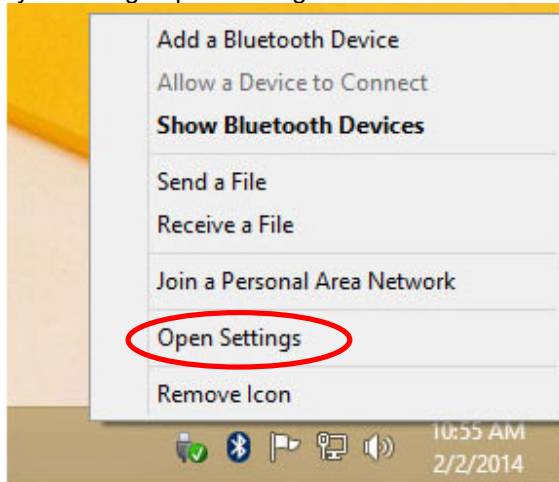


This means that the serial adapter's COM port is closed; however the adapter is still paired and connected over Bluetooth to your computer.

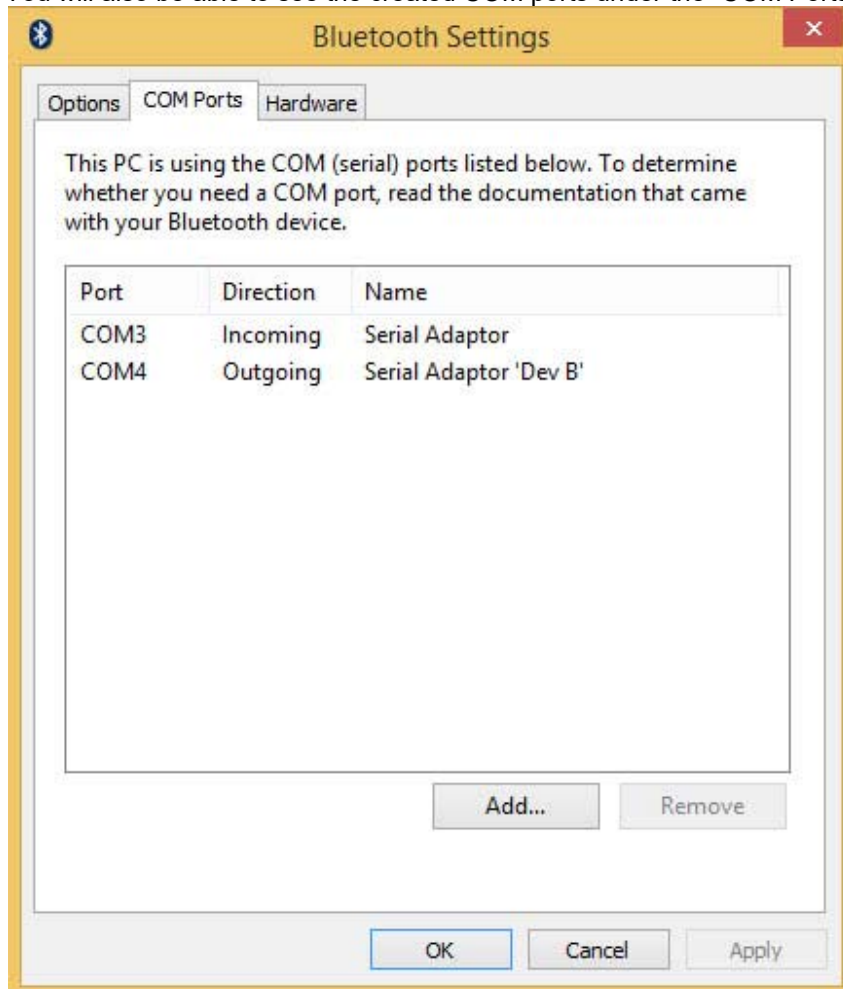
In Device Manager you should now see the two serial over Bluetooth COM ports created by the USB Bluetooth dongle (even Windows says “Not connected”):



By selecting "Open Settings" from the Bluetooth menu in the task bar:



You will also be able to see the created COM ports under the "COM Ports" tab:



You are now ready to configure the adapter's parameters. Jump to the section called "[Configuring the parameters](#)".

## Pairing with Windows Vista, 7 and 8

Windows Vista, 7 and 8 all have built-in Bluetooth drivers by default so the pairing procedure is rather straightforward.

The serial Bluetooth adapter can be paired with your computer's built-in Bluetooth or an external USB Bluetooth dongle. In this Example we use an external USB Bluetooth dongle.

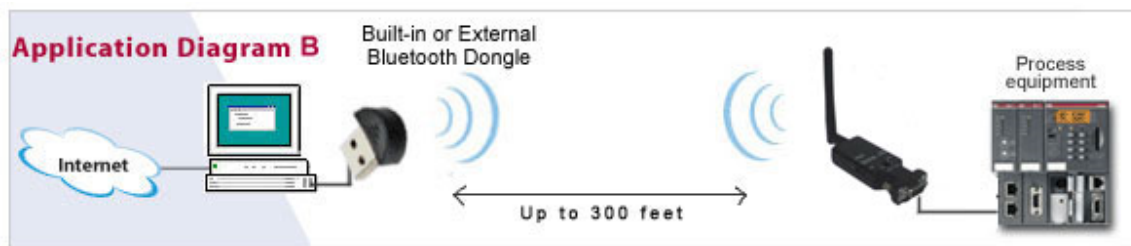
Serial Bluetooth adapter  
(S2B2232I/E)



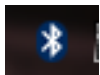
USB Bluetooth dongle



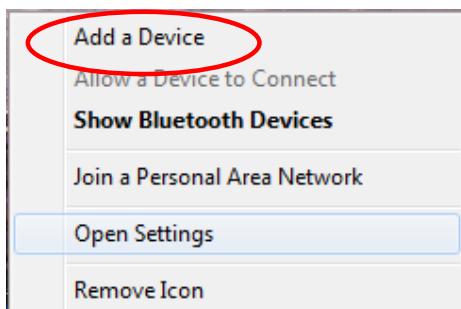
The setup looks like this:



Click the Bluetooth icon in the lower right-side task bar:

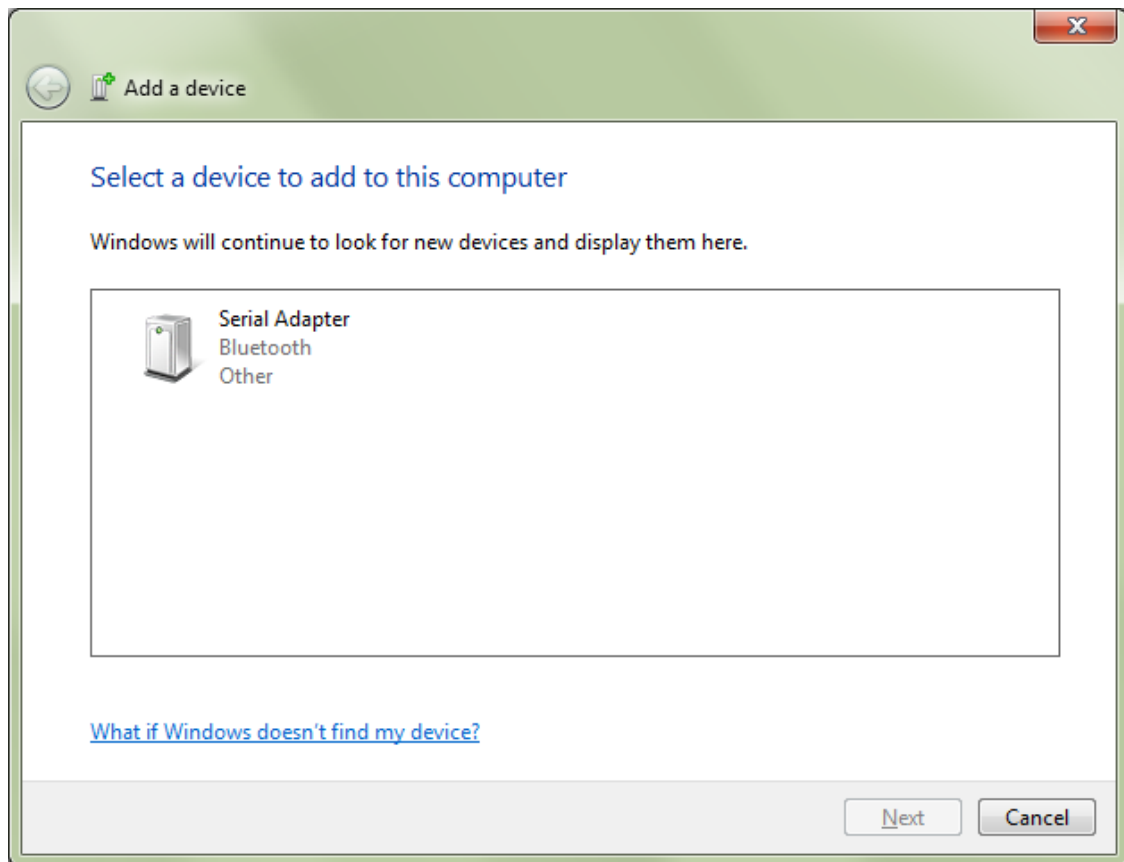


and click "Add a Bluetooth Device" in the menu:

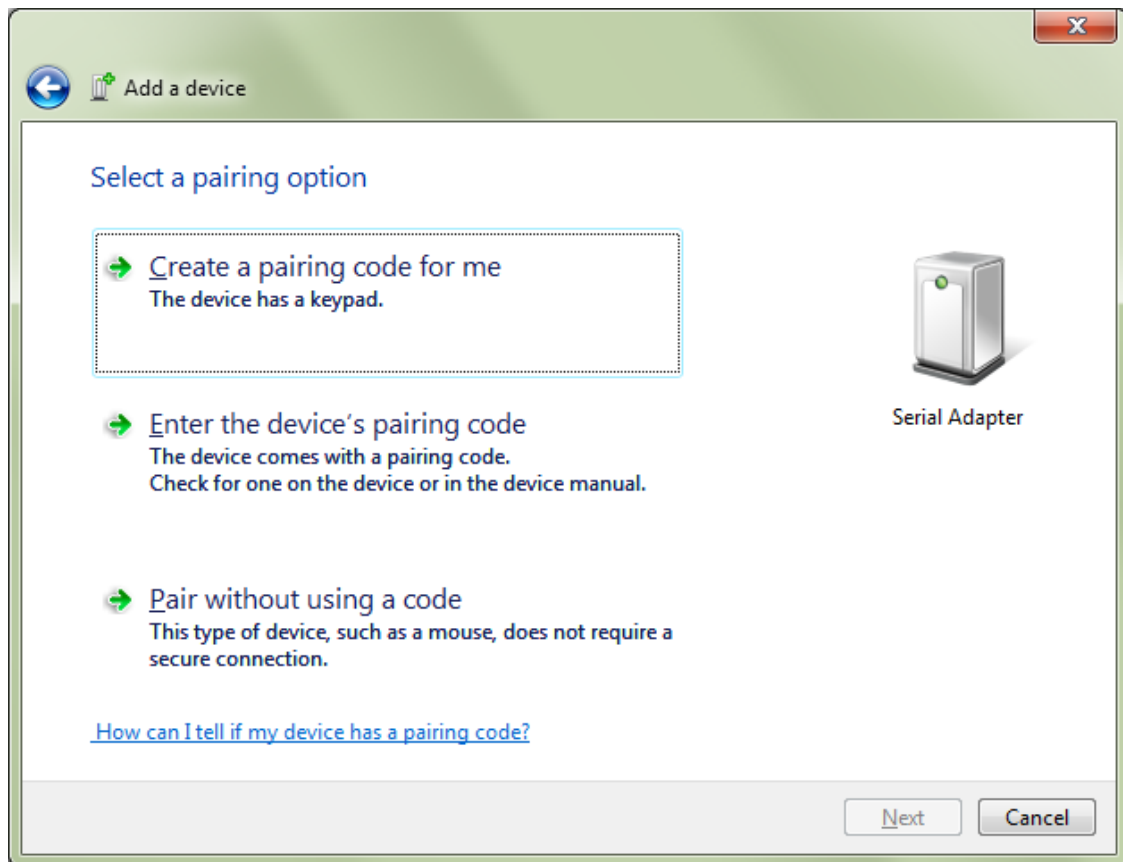




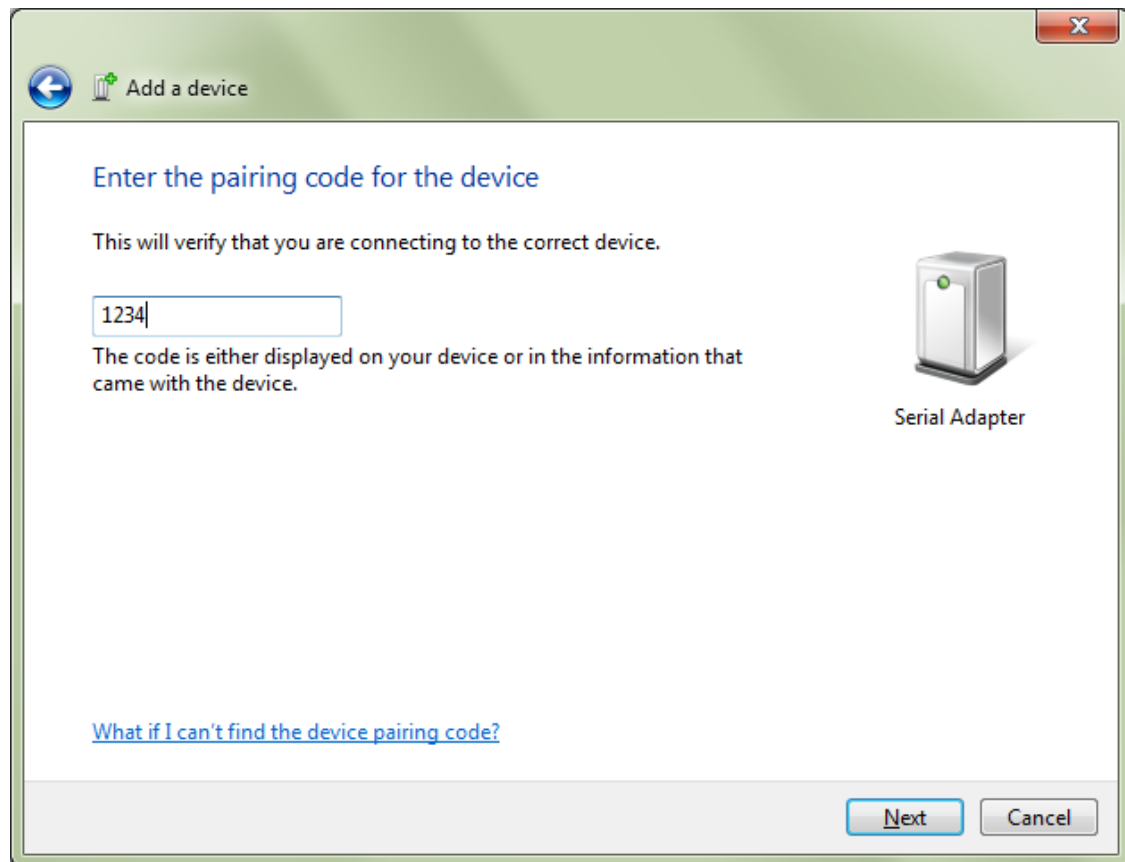
Windows should now search for the serial Bluetooth adapter and be able to find it:



After windows have found the adapter, click "Enter the device pairing code":

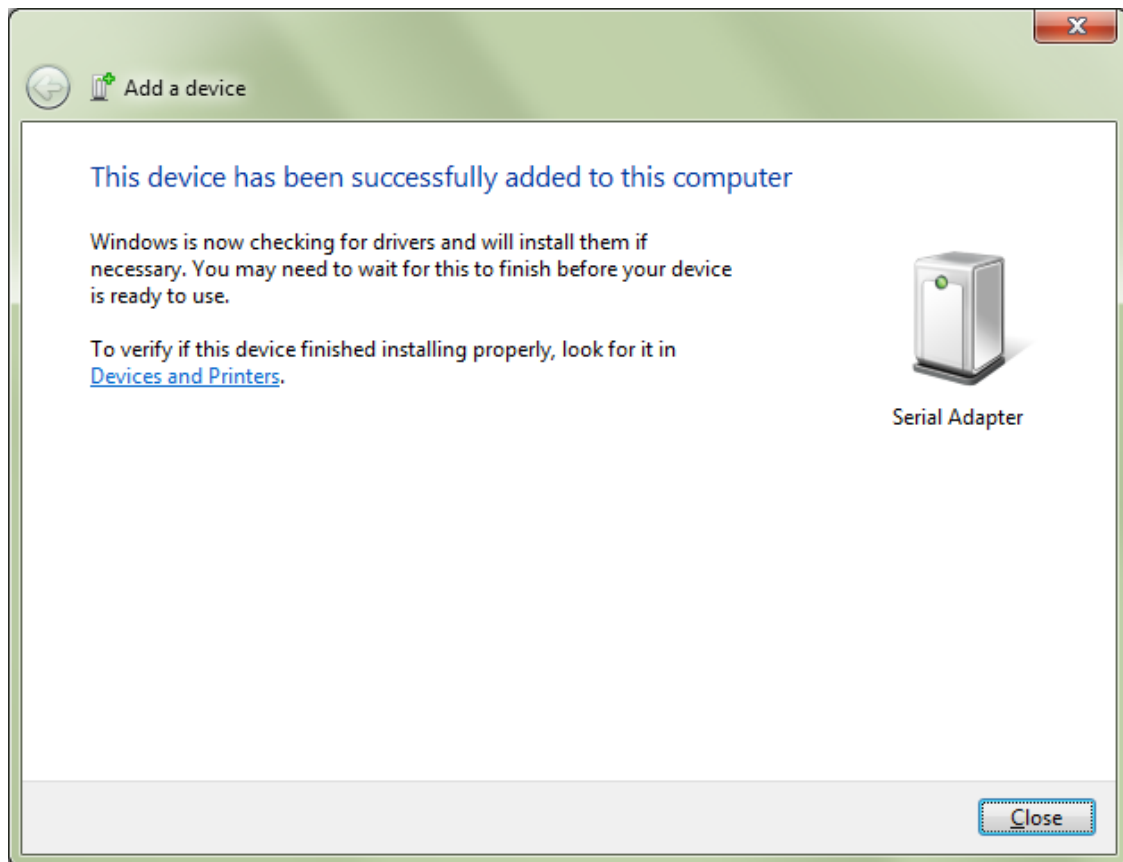


The pairing code is "1234":

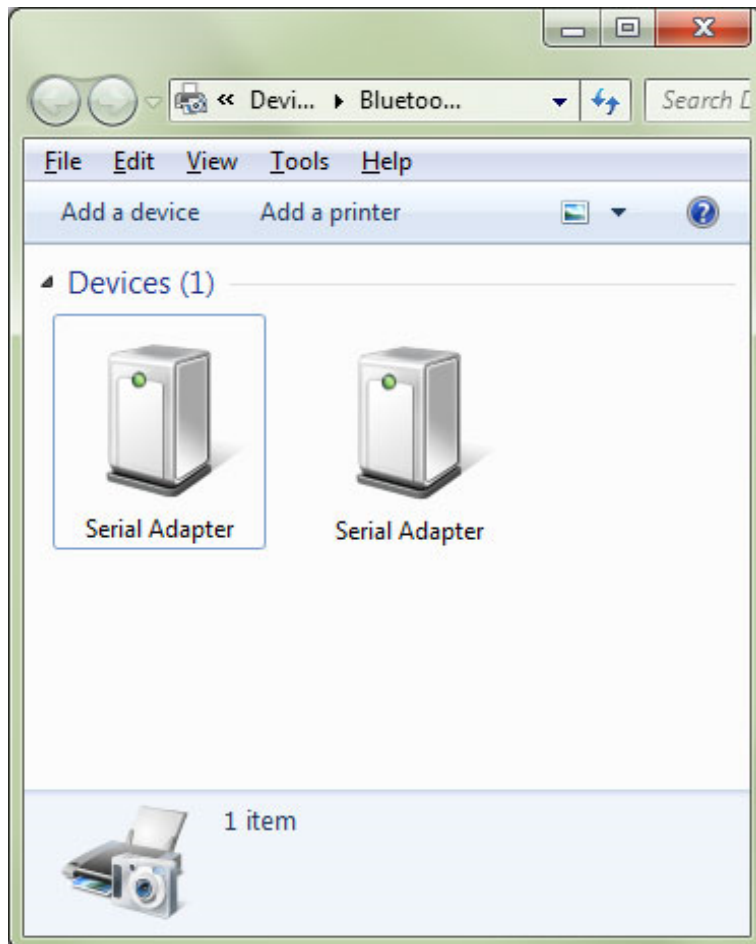


Click Next

The serial Bluetooth adapter is now successfully installed and paired:

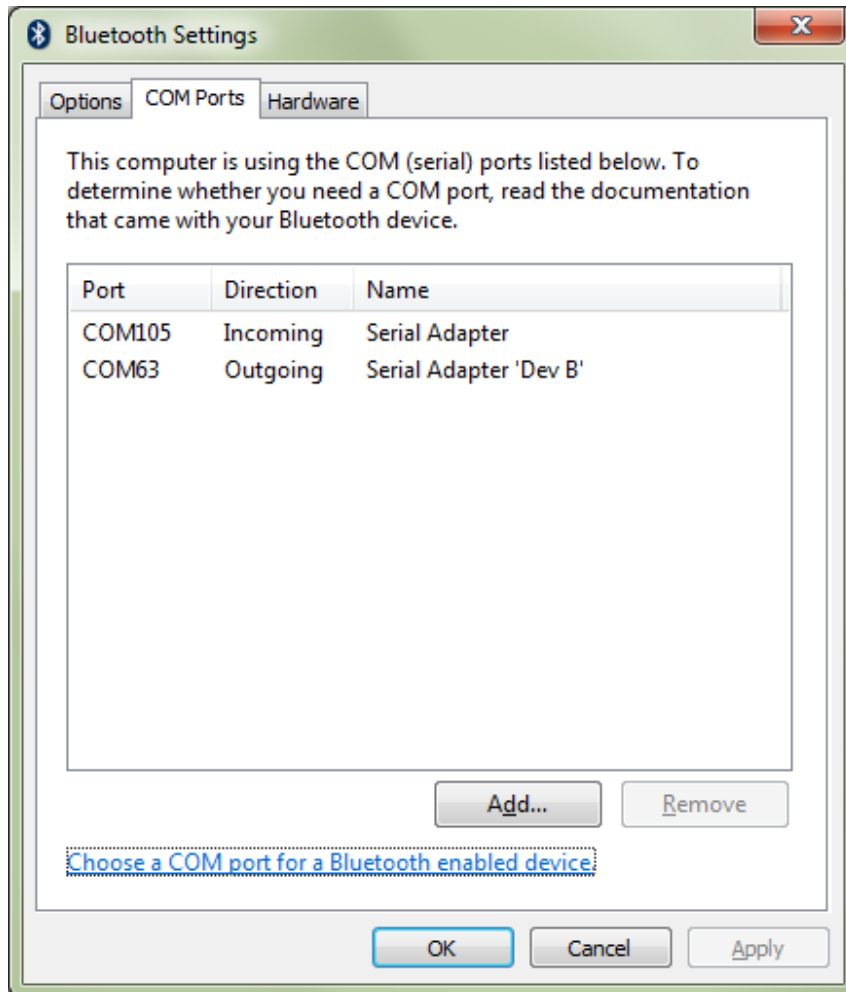


If Windows does NOT find the serial Bluetooth adapter it might be because it has already been found earlier and already exists in the system. In that case you may need to first remove the serial Bluetooth adapter from the system. Click the Bluetooth icon in Windows task bar and chose "Show Bluetooth devices" from the menu:



The image above shows two serial Bluetooth adapters even only one adapter is connected. The reason is that Windows sometimes fails to remove the last adapter which was connected to the computer; you will then need to remove it manually. Right-click the icon and chose "Remove Device" to remove it. Now you can again try to add the serial Bluetooth adapter by clicking the Bluetooth icon in the task bar and chose "Add Device" from the menu.

Assuming that the serial Bluetooth adapter has been successfully installed, click the Bluetooth icon in the Windows task bar and chose “Open Settings”. In the Bluetooth settings window you can now see the COM ports for the serial Bluetooth adapter. In this case COM port number 63 and 105 have been assigned by Windows. Windows assigns an incoming and an outgoing port. To simplify things; COM63 is the main port which we will use for our communication. You do not need to worry about incoming or outgoing ports as long as you identify which port is the main port. The main port in this case for the S2B2232I/E is usually indicated as “Serial Adapter ‘Dev B’” as shown below:



COM63 shown above is the USB Bluetooth dongle.

If you wish to change the COM port number from COM63 to for Example COM10 then you can do so in Device Manager. Right-click the COM port listed under Ports (COM & LTP) in Device Manager and chose “Properties”. Under the “Port Settings” tab click the “Advanced” button, you can here change several settings including the COM port number.

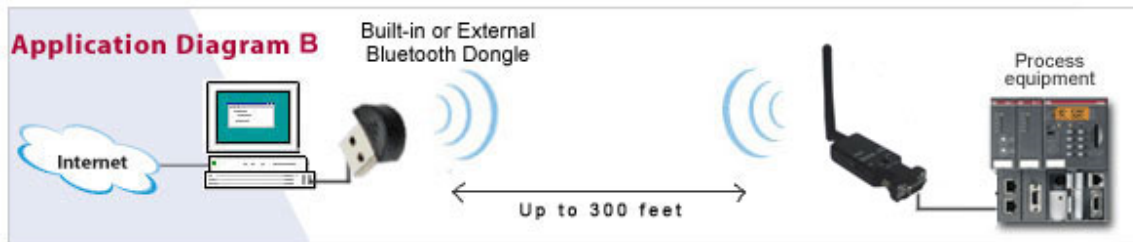
You are now ready to configure the adapter’s parameters. Jump to the section called [“Configuring the parameters”](#).

***Pairing with Windows XP or older***

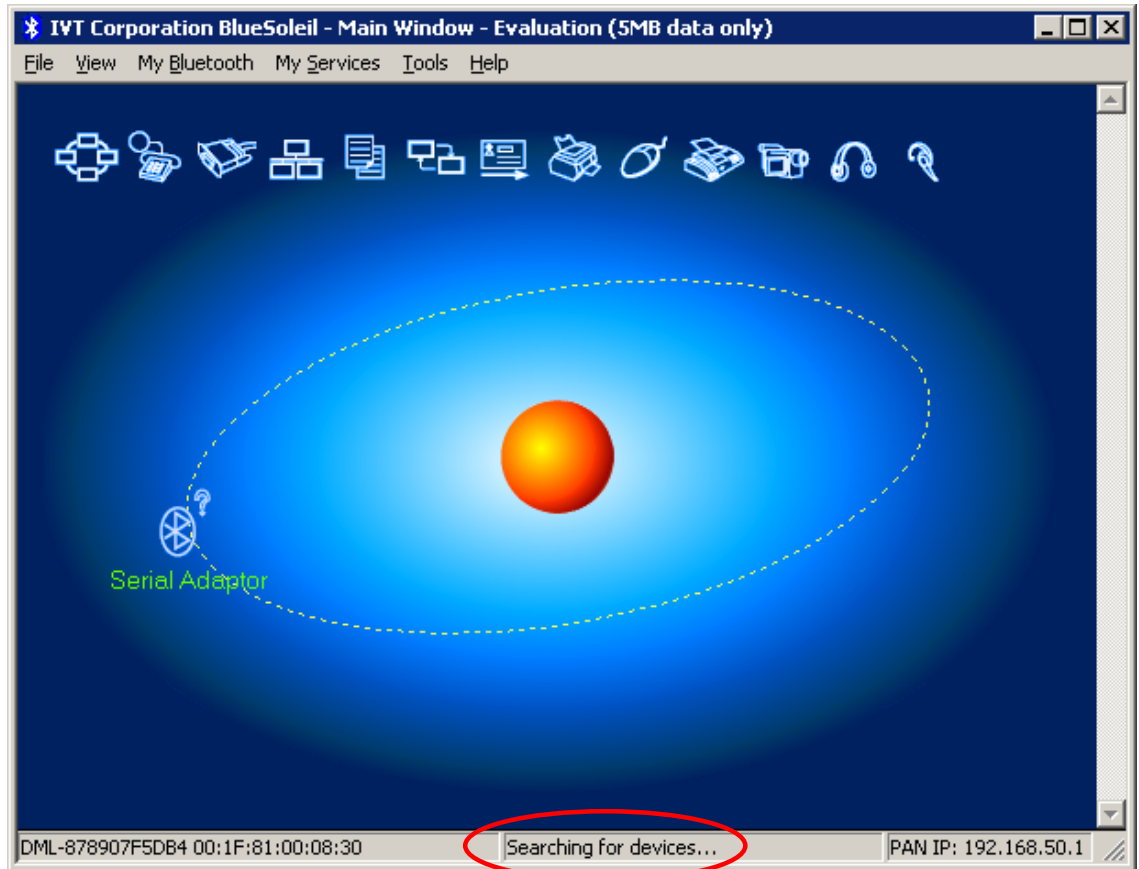
1. Download Bluesoleil from [www.usconverters.com](http://www.usconverters.com)
2. Install Bluesoleil
3. Start Bluesoleil
4. Insert a USB Bluetooth dongle into your computer's USB port.  
If your computer has built-in Bluetooth skip this step.
5. Connect the S2B2232I/E to the power supply, either by a USB power cable or a 110/5V power adapter, and turn it ON. The red LED light on the S2B2232I/E should be steady 'ON' and the blue light should be flashing.



The setup should look similar to this



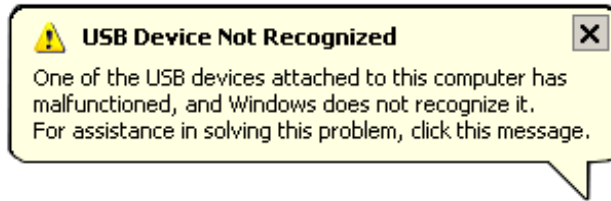
6. To search for devices click on the orange circle in Bluesoleil and the S2B2232I/E will be discovered. The lower status line must say "Searching for devices..." when a device search is in progress.



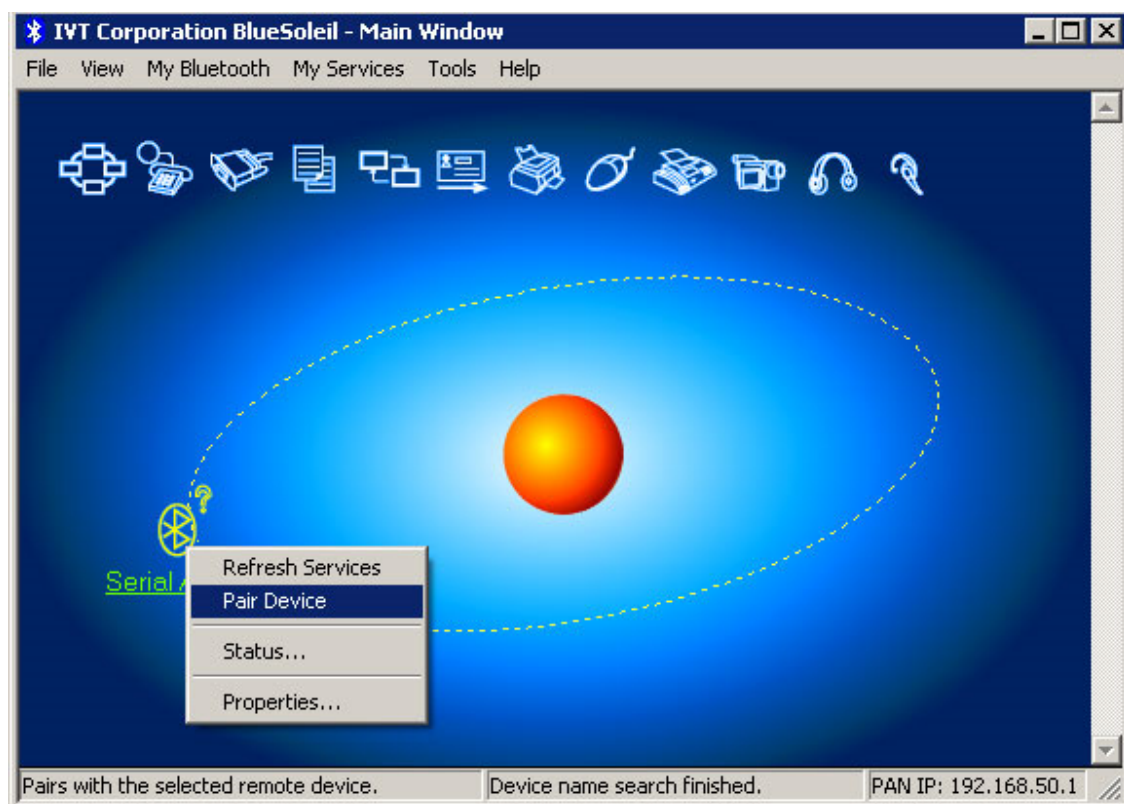
If BlueSoleil cannot find or detect the Serial Adaptor when you click the orange search button a simple solution can be to use a different USB port for the external USB Bluetooth dongle if you are using this. If this does not help try resetting the S2B2232I/E (hold down the reset button for 10 sec with a paper clip while you apply power).



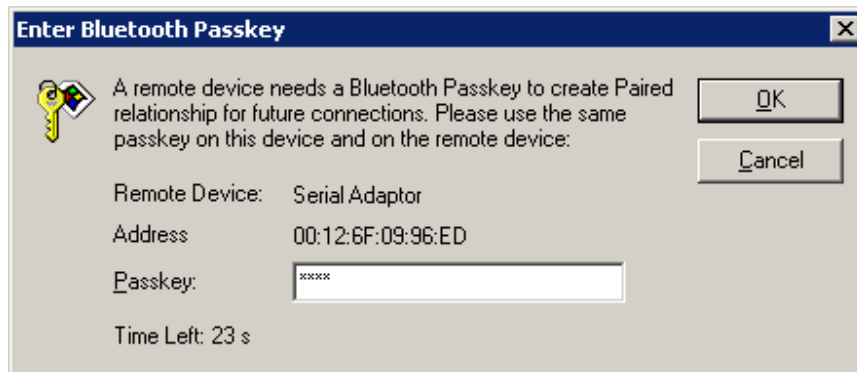
If you are getting a “USB Device Not Recognized” error from Windows when you turn on the S2B2232I/E you can simply just ignore this error. The adapter only gets its power from the USB port, no data is transmitted.



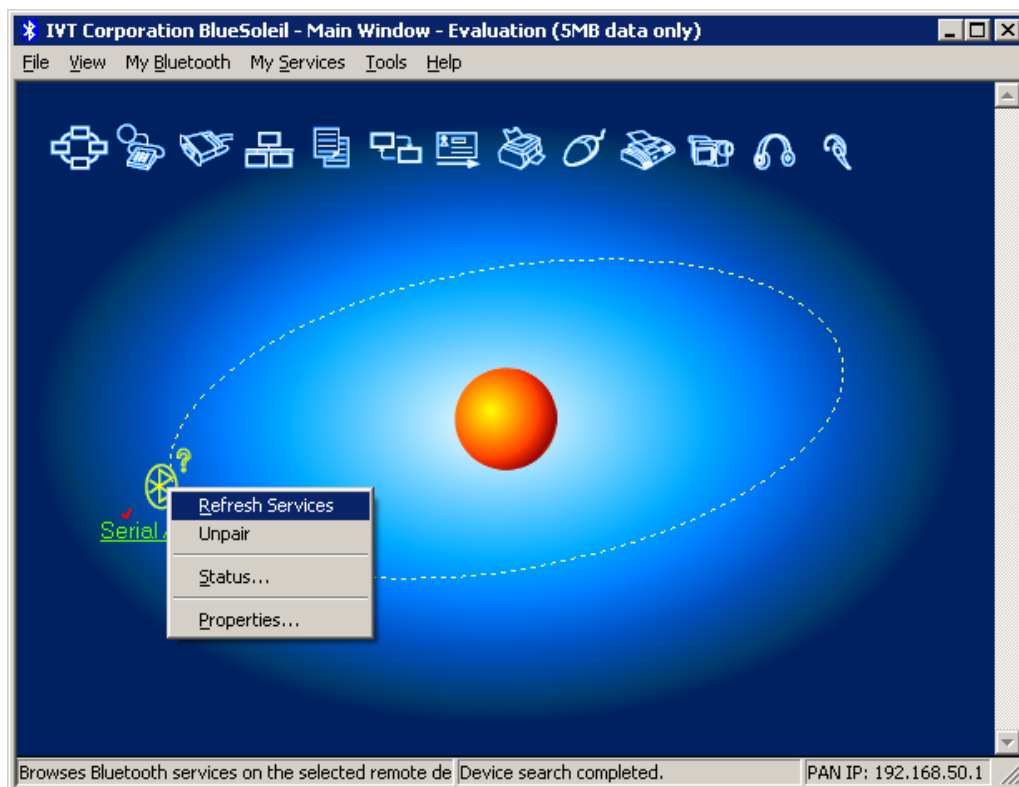
7. Right-click on the Serial Adapter icon in Bluesoleil and click 'Pair Device'



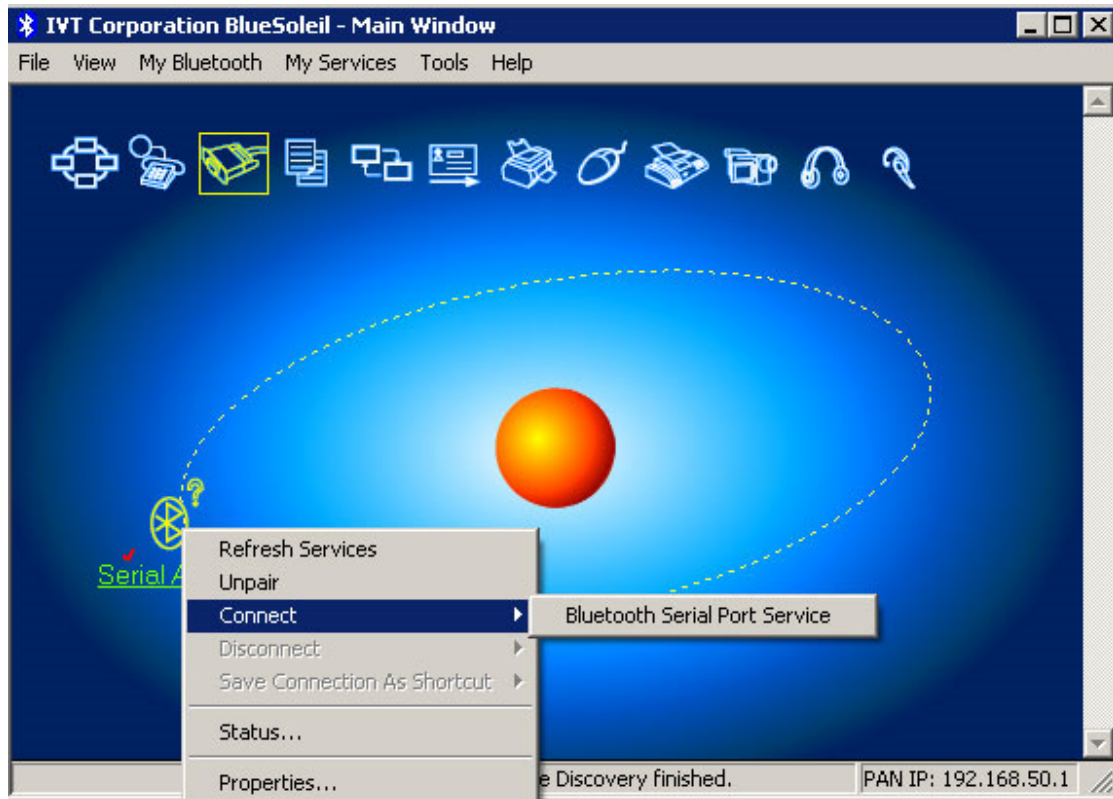
8. Enter the default Pin code which is '1234'



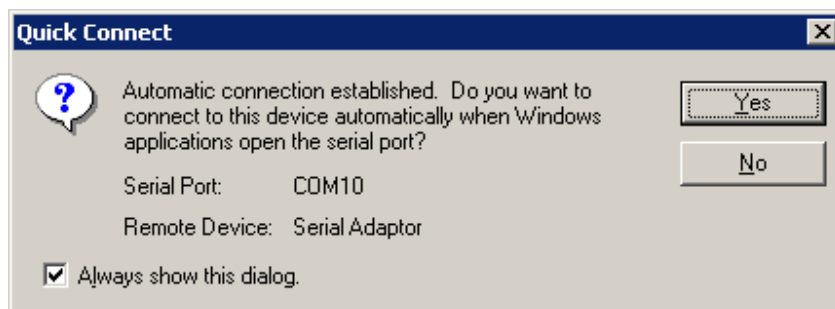
9. Right-click on the Serial Adaptor icon and click "Refresh"



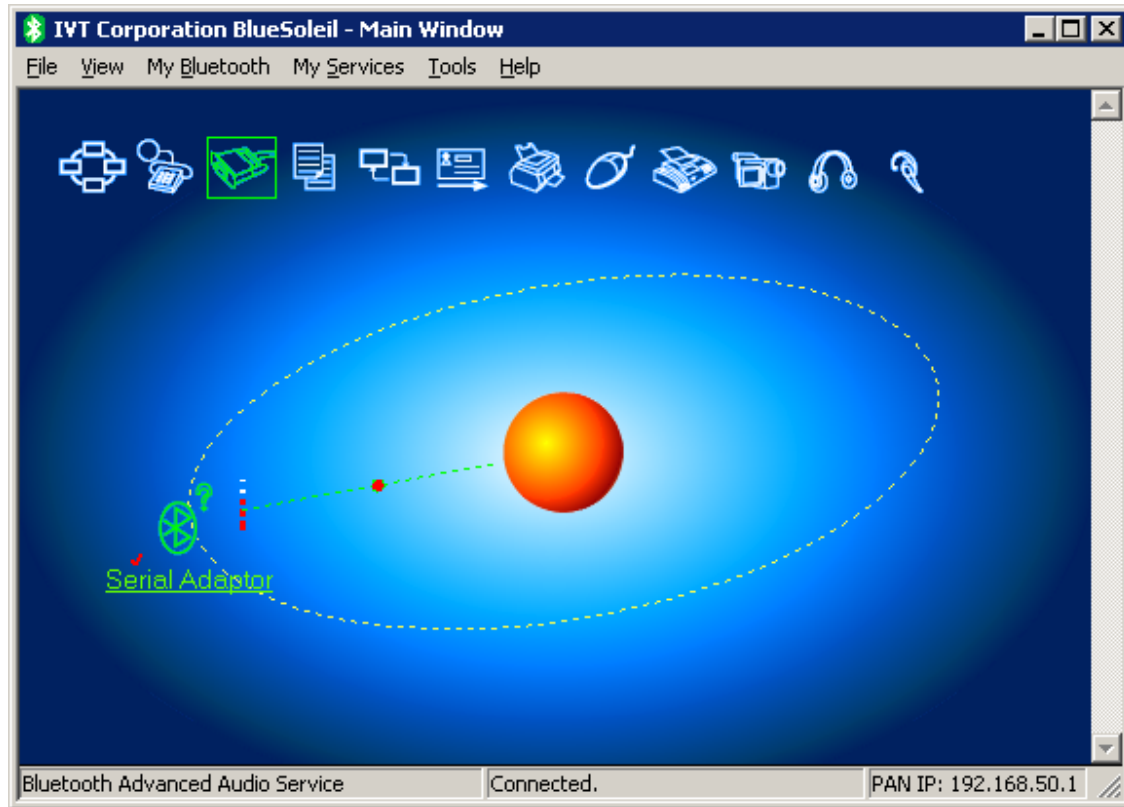
10. Right-click again on the Serial Adapter icon and this time point the cursor on "Connect" and click "Bluetooth Serial Port Service" to connect the S2B2232I/E with your computer.



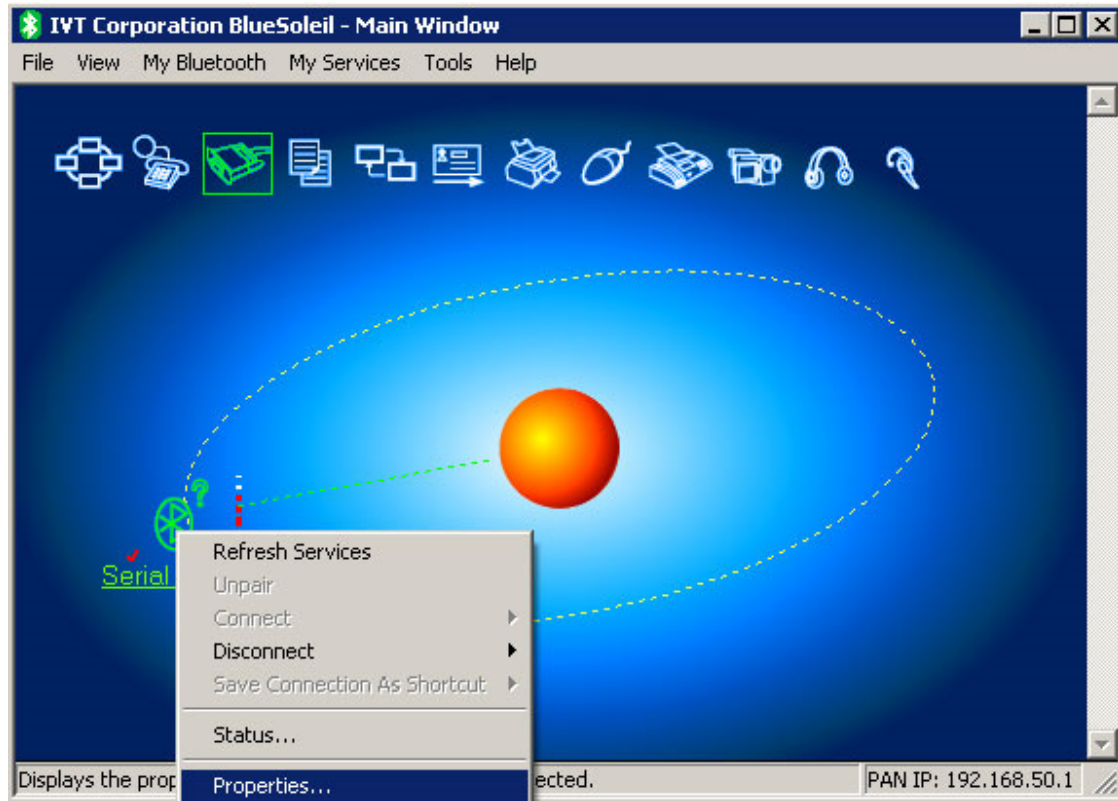
11. If you want Windows to automatically connect to the S2B2232I/E click Yes otherwise click No.



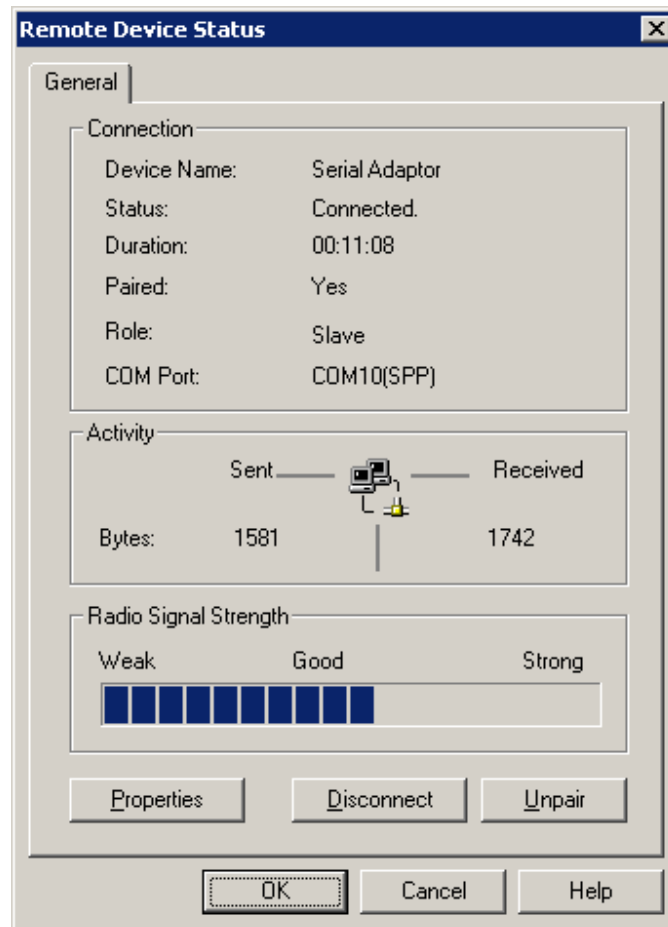
12. The S2B2232I/E is now paired and connected to your computer. When its successfully connected the blue LED light on the S2B2232I/E should be steady blue; and in BlueSoleil a green dotted line with a red arrow going from the serial adapter icon towards the orange circle should be visible.



13. To see the COM port number, status and signal strength, right-click on the Serial Adapter icon and click 'Status'



## 14. Status screen



## Configuring the parameters

Configuring the S2B2232I/E with your own custom settings such a baud rate, data settings, flow control etc. Please refer to the Serial Adapter's datasheet for all available parameters.

**You always need to configure the adapter's COM port parameters to match your serial device's COM port parameters. Otherwise you won't be able to communicate with your serial device.**

The adapter's parameters can be configured by one of the following ways:

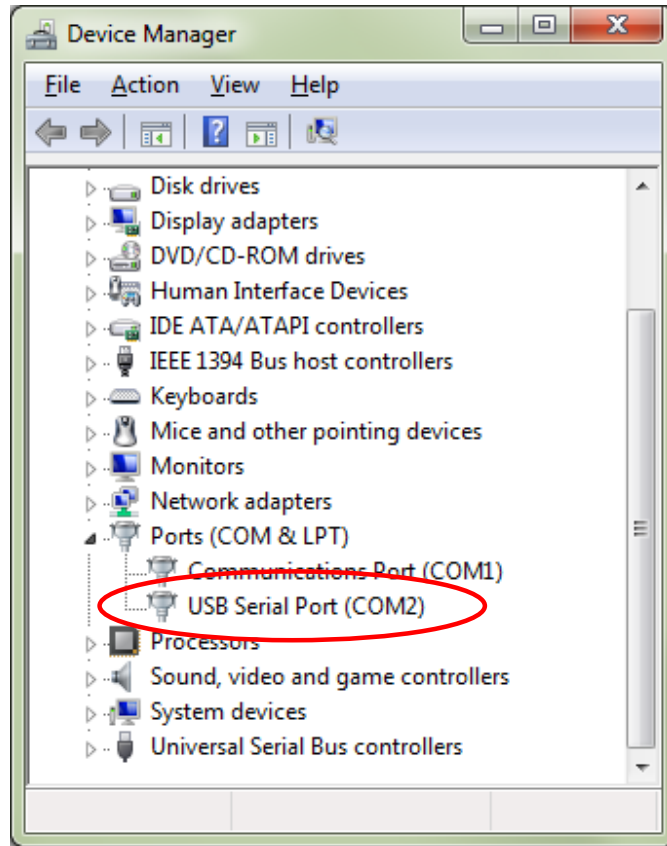
1. DIP switches
2. Through the serial RS232 interface
3. Over Bluetooth

## Configuring the parameters through the serial interface

Configuring the parameters through the serial interface is the easiest way.

If you do not have a built-in serial COM port available in your computer we recommend using our [Pro USB to Serial adapter model XS880](#) (with FTDI processor chip), which is fully compatible with the adapter. We cannot guarantee compatibility with other adapters.

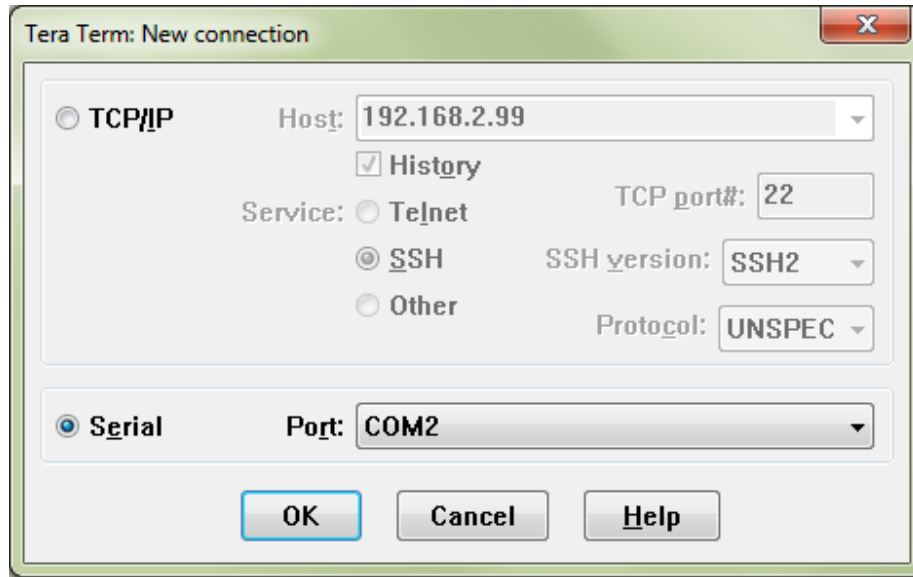
1. Connect the S2B2232I/E to your computer either directly to a COM port, or if you computer does not have a COM port use a USB to Serial RS232 adapter.
2. If you are using a USB to Serial adapter first install the required drivers for the adapter and make sure that a virtual COM port has been successfully created.
3. Connect the S2B2232I/E to the power supply and connect the S2B2232I/E's COM port to the USB serial adapter (or your computer's COM port).
4. If you are using a USB serial adapter check in Windows Device Manager which COM port has been assigned to your adapter, in this case COM port 2.



RESTART YOUR COMPUTER WITH THE USB TO SERIAL ADAPTER CONNECTED TO YOUR COMPUTER AFTER INSTALLING THE DRIVERS. Otherwise you might experience problems with Tera Term communication.

5. Download Tera Term from [www.usconverters.com](http://www.usconverters.com), we do not recommend using HyperTerminal.
6. Install and start Tera Term. At the startup screen choose the virtual COM port number which the USB adapter has created.

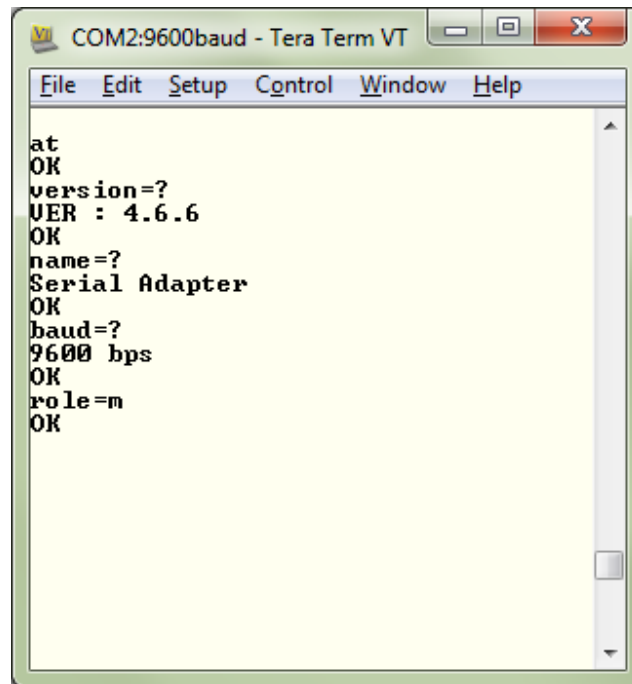




Notice: if your adapter has serial number 14090200 or lower the default baud rate is 19200 baud.

7. Click OK. If there is a Flow switch on your Serial Bluetooth adapter it should be in position DCE (towards the DB9 connector on the S2B2232I/E). You are now ready to send commands to the S2B2232I/E. If you enter the command AT you should get an 'OK' back from the S2B2232I/E.

Example: Entering the command VERSION=? gives you the S2B2232I/E's version number.



Keep in mind: that if you change the baud rate of the S2B2232I/E to for Example 1200 baud then you will no longer be able to communicate with the S2B2232I/E through Tera Term until you also change the baud rate in Tera Term to 1200.

You are now ready to confirm that the adapter can communicate and is working properly. You do that by making a loop-back test. **We strongly recommend that you make a loopback test before you connect the adapter to your serial device.** Please jump to the section called ["Making a loop-back test to verify communication"](#).

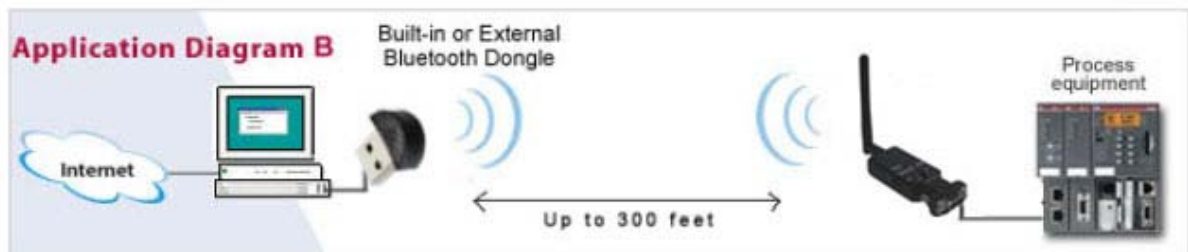
## Configuring the parameters over Bluetooth

Setting the Data Mode and Command Mode using <<< and >>>

First pair and connect two adapters referring to the procedure described earlier in this guide,



or connect the adapter via built-in Bluetooth or an external USB Bluetooth dongle.

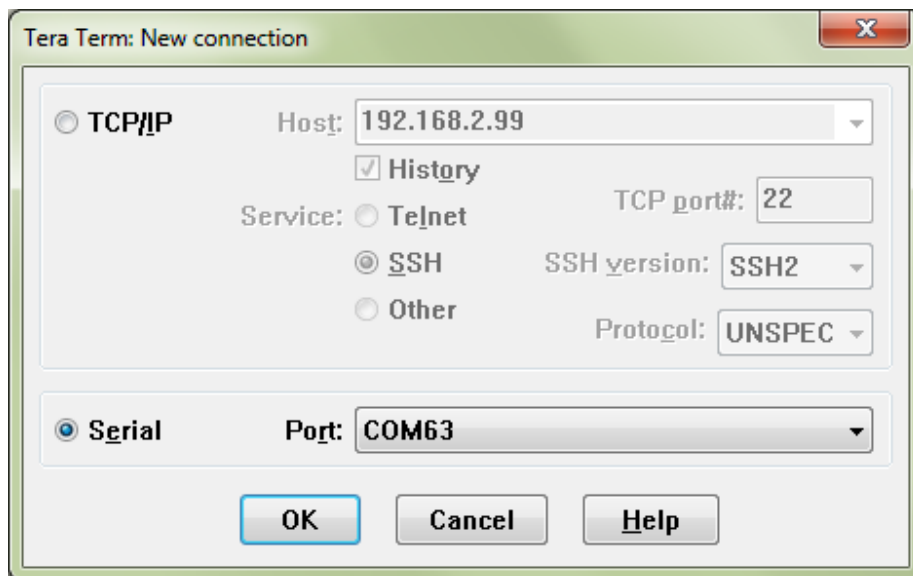


You can use Windows Vista (or higher) built-in Bluetooth management software for pairing the adapter with your computer. Please see how to pair the adapter with your computer earlier in this guide.

Before the connection is made the blue LED light on the adapter should flash which means that the adapter is NOT connected.

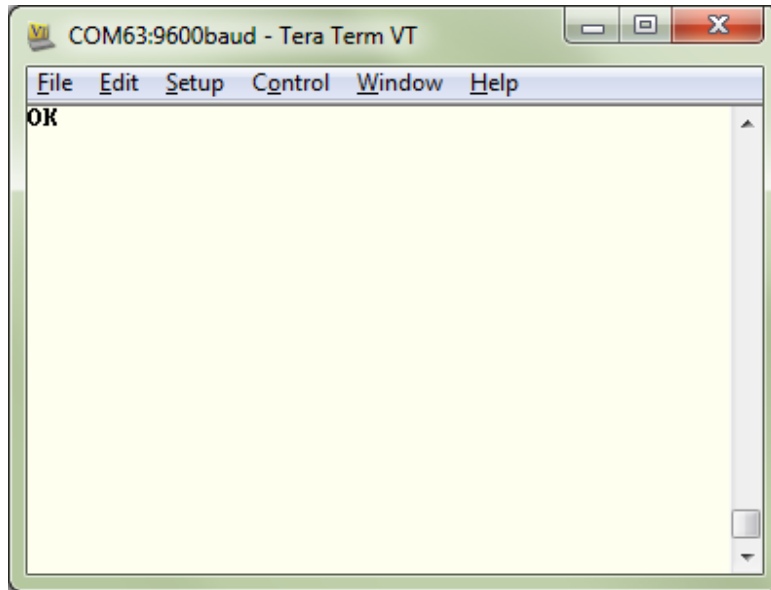
Open Tera Term and open the COM port with the settings shown below, however change the COM port number to the COM port number your system has created.

NOTICE: IF YOU ARE USING A BUILT-IN OR USB BLUETOOTH DONGLE THEN THIS COM PORT NUMBER IS THE COM PORT CREATED BY THE BLUETOOTH DRIVERS, IT IS NOT THE ADAPTER'S COM PORT. PLEASE SEE THE SECTION CALLED "Pairing the serial Bluetooth adapter with your computer" FOR HOW TO DETERMINE WHAT THE BLUETOOTH CREATED COM PORT NUMBER IS.

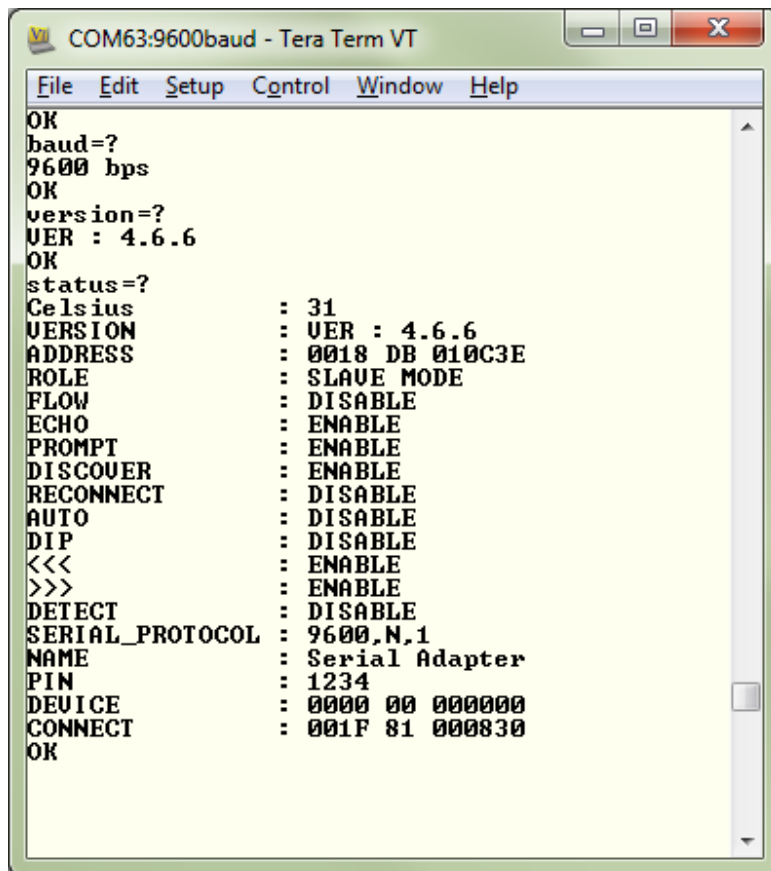


Click the OK button and the adapter will open the COM port. The blue LED light on the adapter should be steady ON.

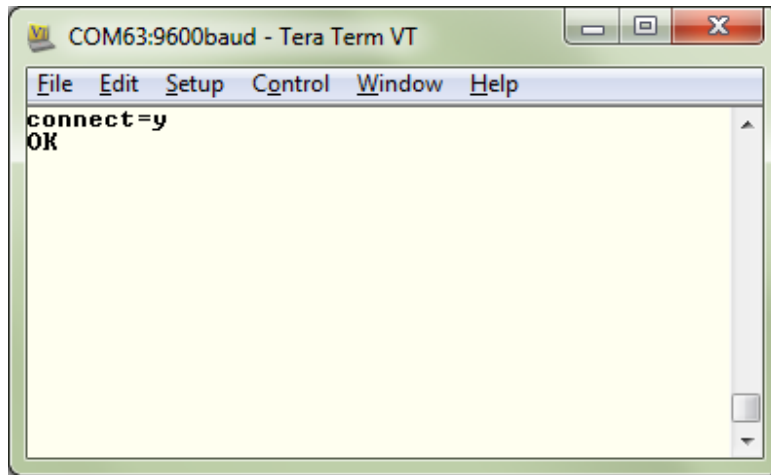
Now hold down the Shift key on your keyboard and press the > key 3 times in a row with less than 500ms between the presses. You should now receive an "OK" message back from the adapter, indicating that it is in command/configuration mode. It may take a few tries to get the "OK" to appear since the timing of the three > signs have to be correct.



You can now enter any AT command which will be sent to the serial adapter over Bluetooth. For Example enter baud=? And you will get the current baud rate back from the adapter.



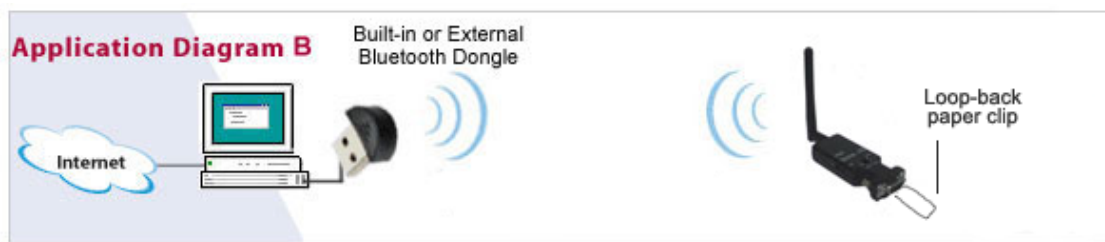
To get the adapter back to Data Mode you can enter the command: connect=y



## Making a loop-back test to verify communication

To verify that the S2B2232I/E is properly working, paired and connected you can make a loop-back test. In this test you will check if you can send data from your computer out through your computer's Bluetooth (which actually is a virtual serial COM port) to the TX (transmit) wire on the S2B2232I/E (pin 2), loop it back (by the help of a paper clip) and then receive it back on the RX (receive) wire of the S2B2232I/E, and finally receive it back on your computer.

To make the loop-back test you will need to setup and pair the S2B2232I/E with either your computer's built-in Bluetooth or a USB Bluetooth dongle as shown in the image below:

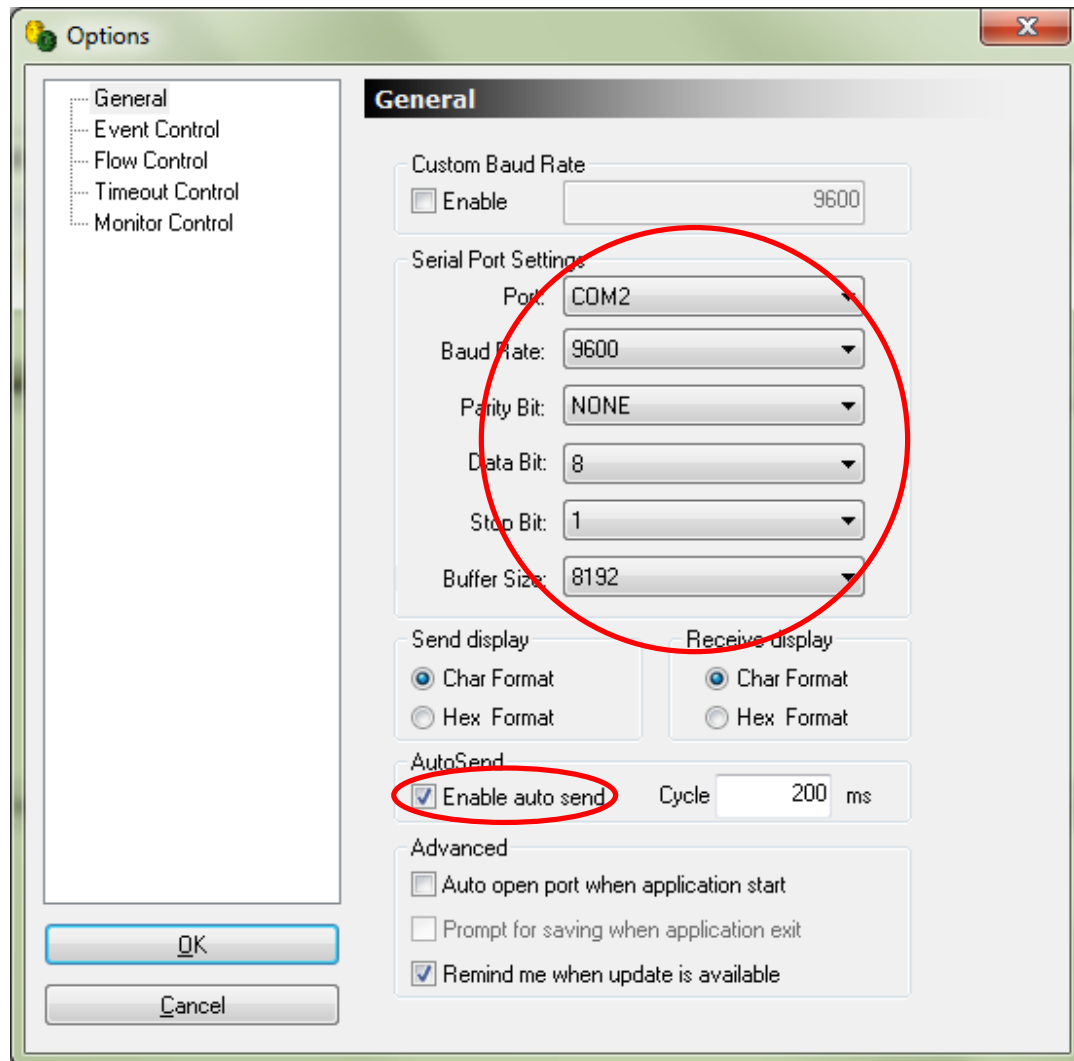


Please carefully follow the steps for how to pair the adapter with your computer described earlier in this guide. In order to successfully perform the loop-back test the S2B2232I/E MUST be properly paired with your computer.

1. Download the software AccessPort from [www.usconverters.com](http://www.usconverters.com).
2. Start AccessPort.
3. Click Tools > Configuration and enter the S2B2232I/E's COM port parameters (9600/NONE/8/1), see screenshot below and the COM port number it has created, in this case COM 2.

To find out which COM port number you need to enter you can check in Windows Bluetooth Settings under "COM Ports", use the outgoing port called "Dev B" (see the section called "Pairing the serial Bluetooth adapter with your computer.").

It is important you enter the correct COM port number otherwise you will not be able to communicate with the S2B2232I/E.



Notice: adapter serial number 14090200 and lower has 19200 baud as default.



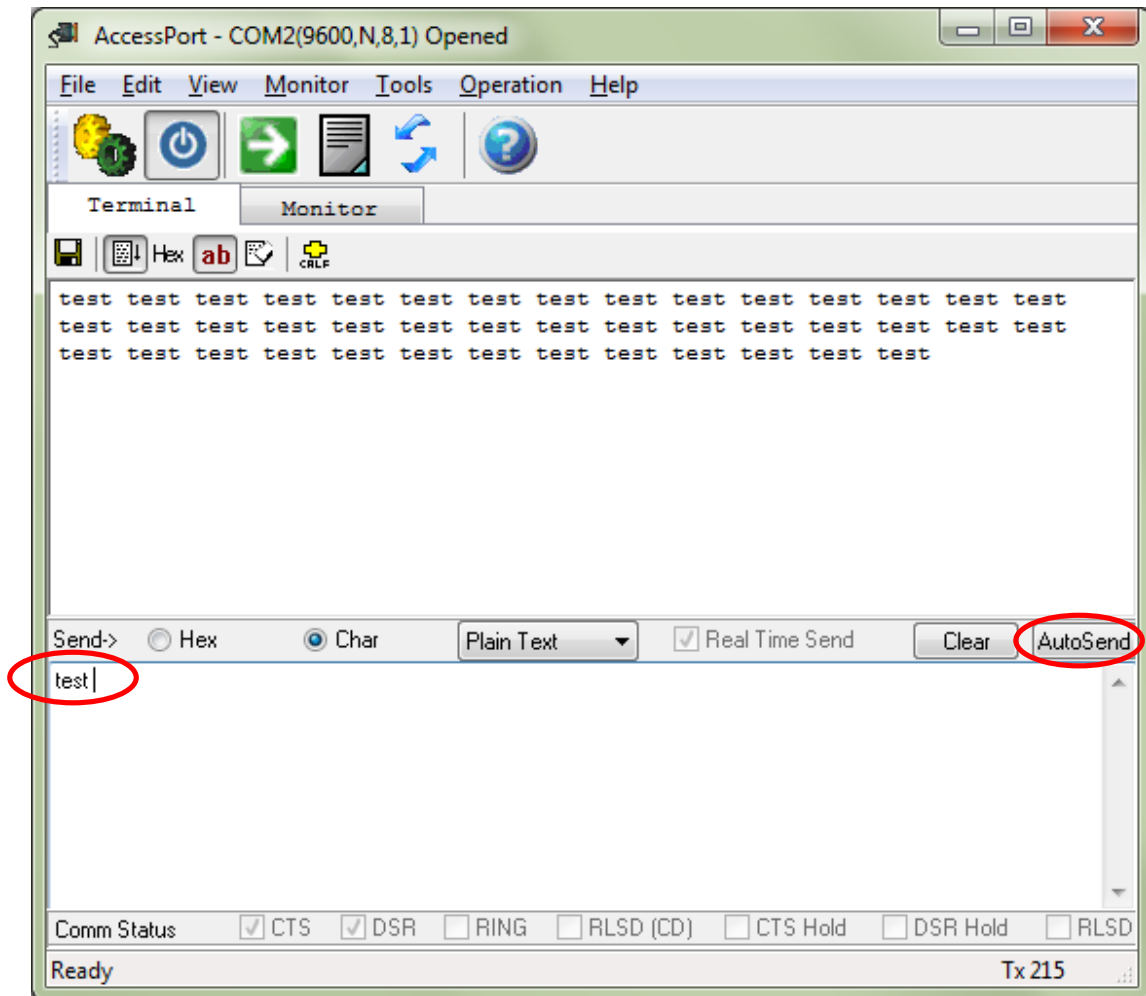
4. Loop-back the TX and RX signals. To do this you can simply use a paperclip by connecting it from pin 2 to pin 3 on the S2B2232I/E's DB9 connector:



The S2B2232I/E obviously cannot and should not be connected to your serial device when you do this test. It only needs to have the loop-back paper clip and power connected and turned ON.

5. In AccessPort open the COM port by clicking Tools > Port Switch. Make sure the COM port is properly opened.  
If AccessPort cannot open the port this is an indication that the S2B2232I/E is not properly connected/paired or the COM you are trying to open is in use by another process in your computer or the COM port for some other reason has not been successfully created, perhaps you entered the wrong COM port number in AccessPort Configurations.

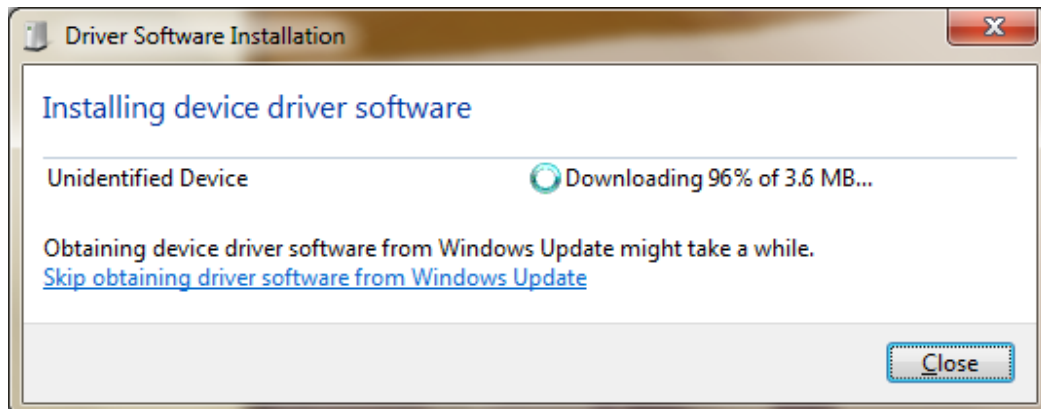
Enter a text string in the lower (send) window and click the "AutoSend" button. With the S2B2232I/E properly connected and linked you should now be able to receive the same characters in the upper (receive) window.



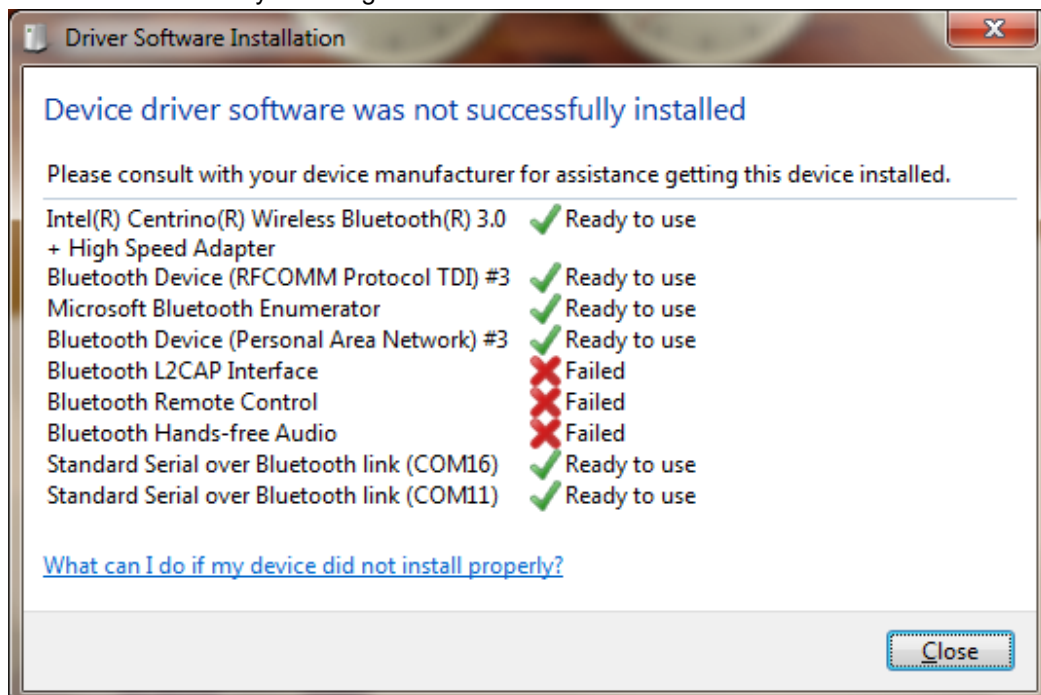
When the port is open the blue LED light on the serial adapter should be solid on.

## Installing drivers for a USB Bluetooth dongle

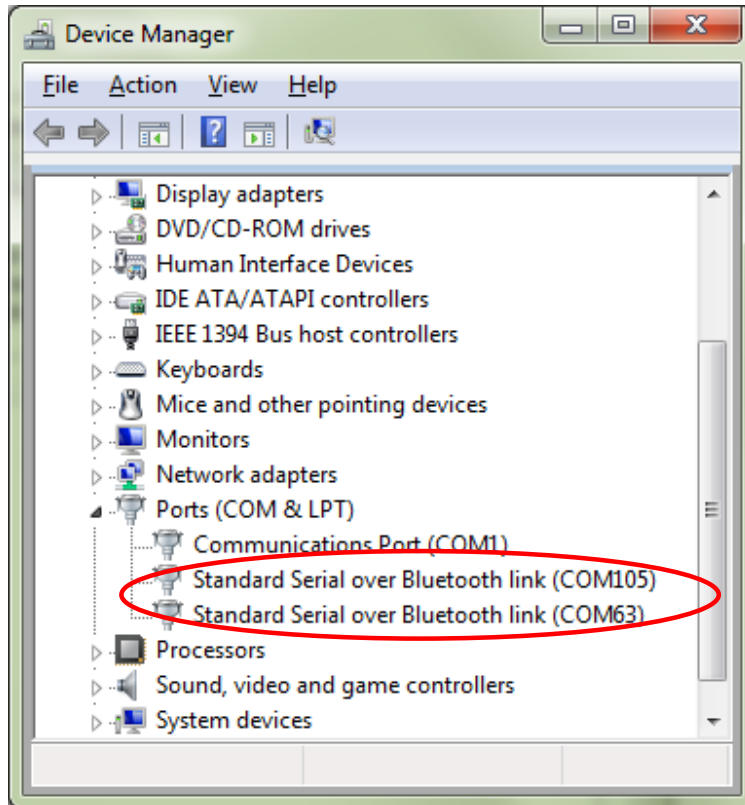
If your computer does not already have built-in Bluetooth, then you can instead use a USB Bluetooth dongle. Most operating systems including Windows 7, 8 and 10 already has drivers installed. If not, simply plug-in the dongle to your computer's USB port. Windows should now search for the drivers for the USB Bluetooth dongle, (you may need to be connected to the internet).



Windows automatically installing the drivers.

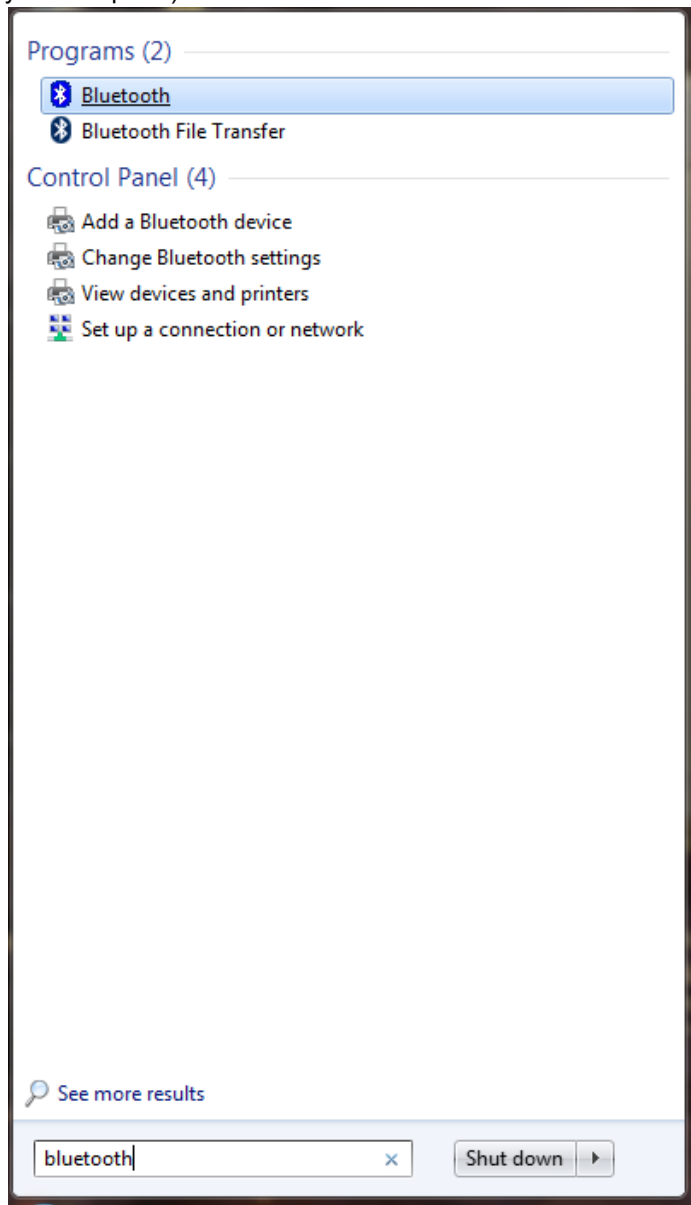


After the installation has finished successfully (there might be some failed control items as shown in the image above, you don't need to worry about this) you will be able to see two COM ports in Windows Device Manager. One is an outgoing port and the other is an incoming port. Both are virtual COM ports created by the Bluetooth drivers and the dongle.

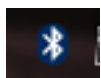


Now you need to pair the serial Bluetooth adapter with the computer via the USB Bluetooth dongle.

Enter the word "Bluetooth" in the start menu and click the Bluetooth link that shows up. This will start Windows default Bluetooth management software (if this has successfully been installed on your computer).



A Bluetooth icon should now appear in the task bar:



## Pairing with another Serial Bluetooth Adapter

If you do not have a built-in or external Bluetooth dongle you can instead use two serial Bluetooth adapters to setup a link as illustrated in below illustration. This is a more direct form of cable replacement since you do not need Windows Bluetooth drivers or Bluesoleil or any other software to establish a communication link.

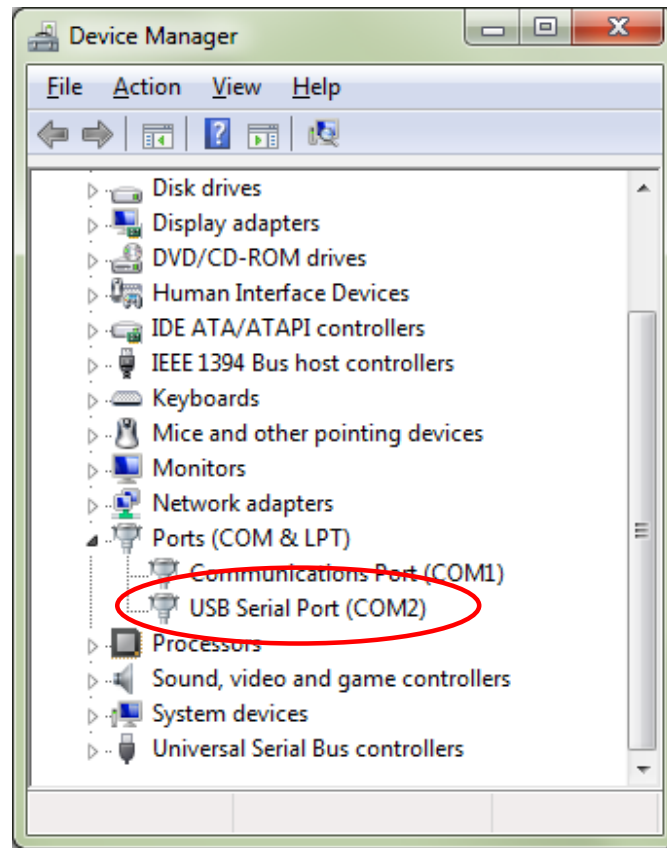


First you will need to configure the two units as a slave and a master. To do this you can use Tera Term or HyperTerminal.

1. Connect one serial Bluetooth adapter to your computer, this will be assigned the master unit. If your computer does not have a serial port then you can connect the serial Bluetooth adapter via a USB to serial adapter. If using a USB serial adapter make sure that the COM port has been successfully created (check in Device Manager) before continuing. Please see our "USB to Serial Setup Guide" for information on how to successfully setup a USB serial Adapter. We recommend using a Premium USB to Serial adapter (with FTDI processor chip), Prolific chips will in some cases not work. Notice the COM port number, you will need it later.

Notice: The parameters of the S2B2232I/E can be configured through the serial COM interface or over Bluetooth.

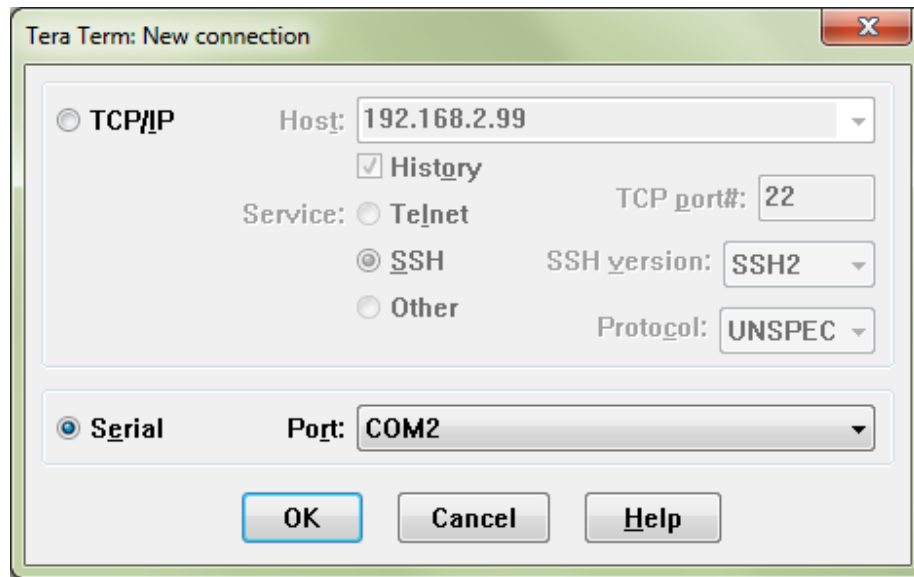
RESTART YOUR COMPUTER WITH THE USB TO SERIAL ADAPTER CONNECTED TO YOUR COMPUTER AFTER INSTALLING THE DRIVERS. Otherwise you might experience problems with Tera Term communication.



In this Example the COM port created by the USB serial adapter is COM2 and the computer's built-in COM port is COM 1.

Now you need to configure one adapter as Master and one as Slave so that they can be paired and communicate with each other. We use Tera Term for configuring the adapter's parameters.

2. Download Tera Term from [www.usconverters.com](http://www.usconverters.com).
3. Install and start Tera Term. At the startup screen choose the virtual COM port number which the USB adapter has created.



4. Click OK.  
Note: make sure Tera Term's port is set to 9600 baud which is the Bluetooth adapter's default setting, (adapter serial number 14090200 and lower has 19200 baud as default).
5. If there is a Flow switch on your Serial Bluetooth adapter it should be in position DCE (towards the DB9 connector on the S2B2232I/E). You are now ready to send commands to the S2B2232I/E. If you for Example enter the command AT you should get an 'OK' back from the S2B2232I/E.

Example: Entering the command VERSION=? gives you the S2B2232I/E's version number.

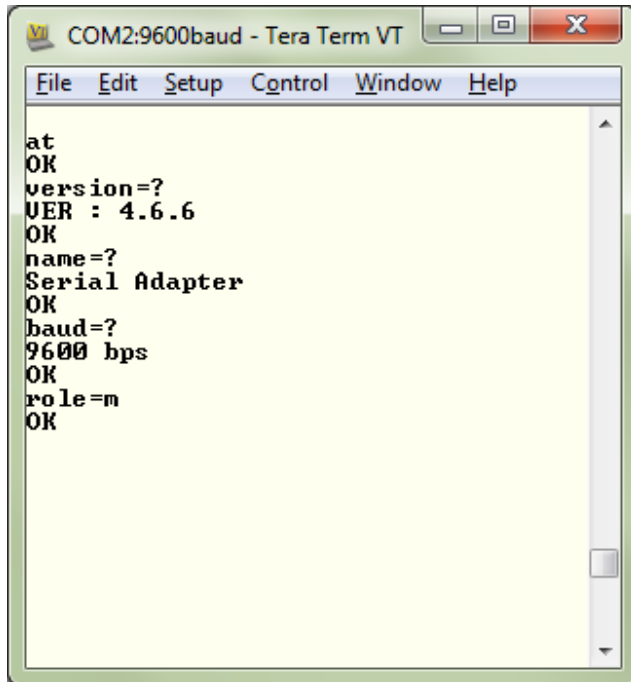
To be able to setup a link between the two serial Bluetooth adapters, one unit has to be configured as a Master and the other has to be configured as a Slave (Slave this is the default setting).

To change the adapter from Slave mode (default mode) to Master mode enter the following command:

ROLE=M

This will put the adapter in Master mode, (for a list of all commands please refer to the serial Bluetooth adapters user's manual).





When the Serial Bluetooth Adapter is in Master mode the blue LED light will flash at a rate of approximately 0.9 sec. This means that the adapter is inquiring and searching for other serial Bluetooth adapters in the area.

To be able to auto-pair the two serial Bluetooth adapters you will also have to configure the MASTER adapter to auto-connect; you do that by sending the AUTO=Y command to the adapter in Tera Term. This command only applies to the Master adapter, not the slave.

You can now connect the other serial Bluetooth adapter (the slave) to the power supply and turn it on. The factory default for the serial Bluetooth adapters is Slave mode, so you do not need to configure the second adapter.

If configured correctly the Master adapter will within 5 seconds automatically find and connect to the Slave adapter and the blue LED light will be steady ON. The wireless communication link is now established.

To test if you successfully can send and receive data through the link you can make a loop-back test as described later in this guide.

## Enabling the DIP switches

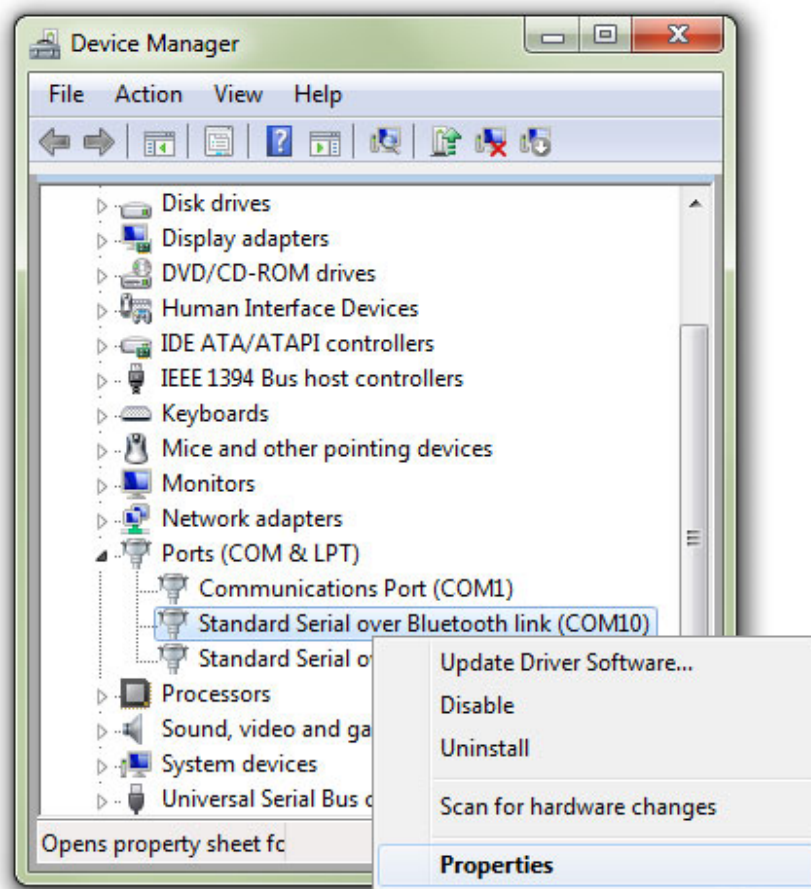
The S2B2232I / S2B2232E does not have DIP switches on top of the adapter

## Changing the COM port number

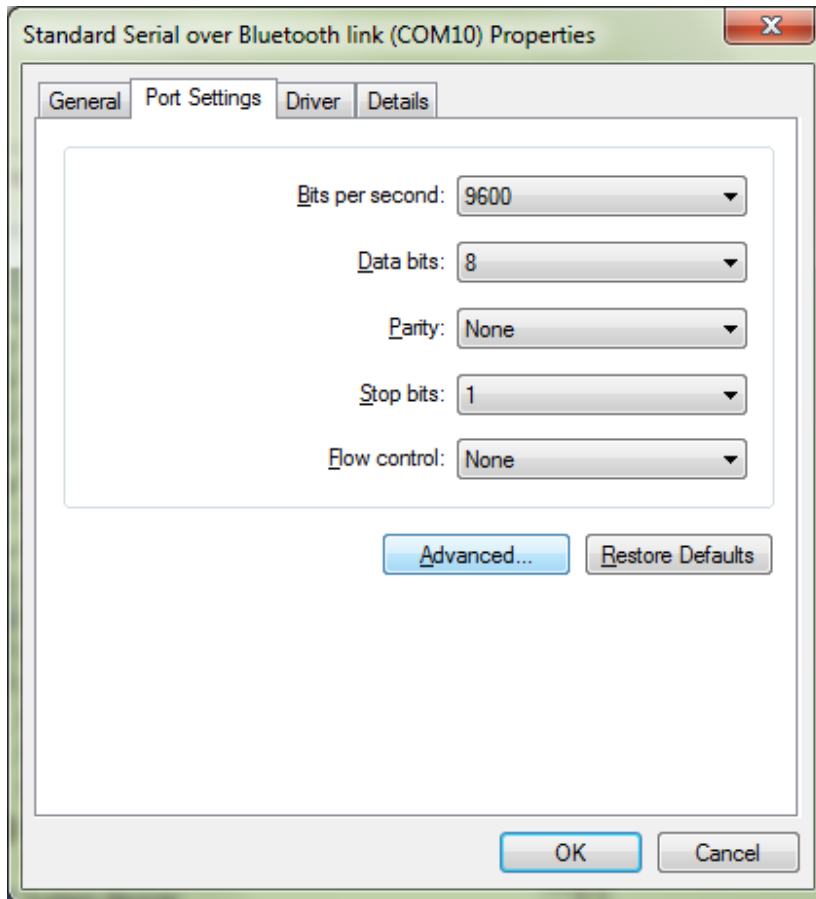
If you need to change the COM port number the S2B2232I/E is using, this can be done as following:

Go to Windows Device Manager, right-click on the COM port which Bluesoleil (or your built-in or USB Bluetooth dongle) has created, in this case COM 10 and select "Properties".

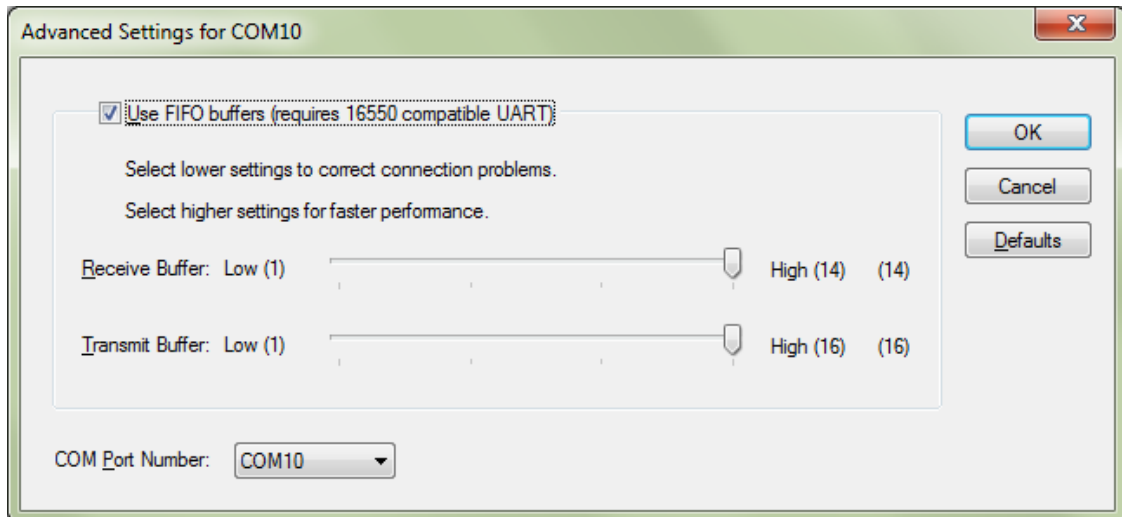
If there are multiple COM ports listed in Device Manager you can determine which port to click by right-clicking the Serial Adapter icon in BlueSoleil and click 'Status', as described in section 1 of this guide; or if you are using Windows 7's built-in Bluetooth drivers you can go to Windows Bluetooth Settings and confirm which port is the outgoing COM port.



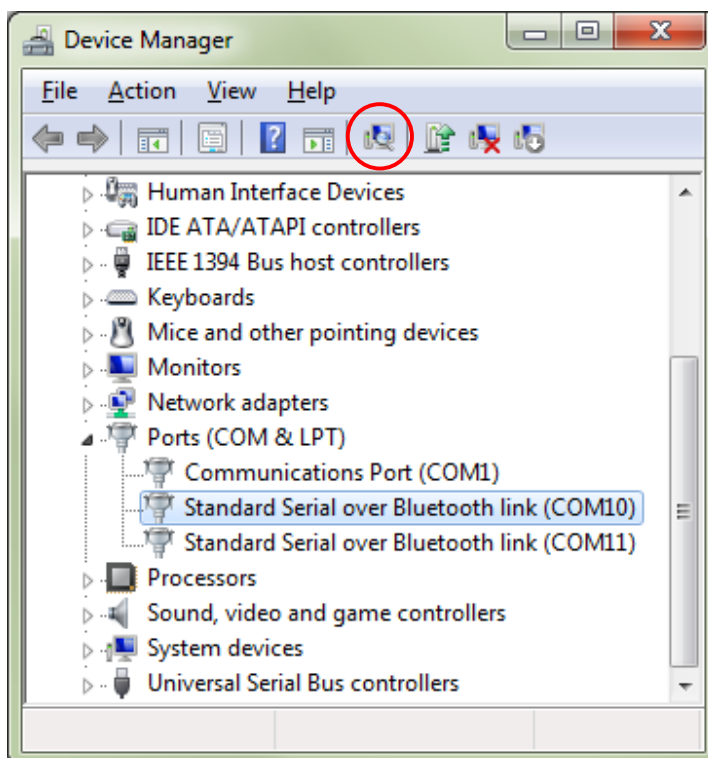
Under the 'Port Settings' tab click the "Advanced" button



You will here be able to change the COM port number



After you have changed the COM port number click Ok. In Windows Device Manager you may need to click the "Scan for Hardware changes" icon to have the changes show up:



## Resetting the serial Bluetooth adapter

To reset the adapter to factory settings simply press and hold the reset button located on the top of the adapter. Use a paper clip and carefully press AND HOLD the micro button through the hole in the housing for approx 2 – 5 seconds. The adapter will then reset and restart.

Resetting the adapter by pressing the reset button will erase all settings you have entered and reset them to factory default settings.

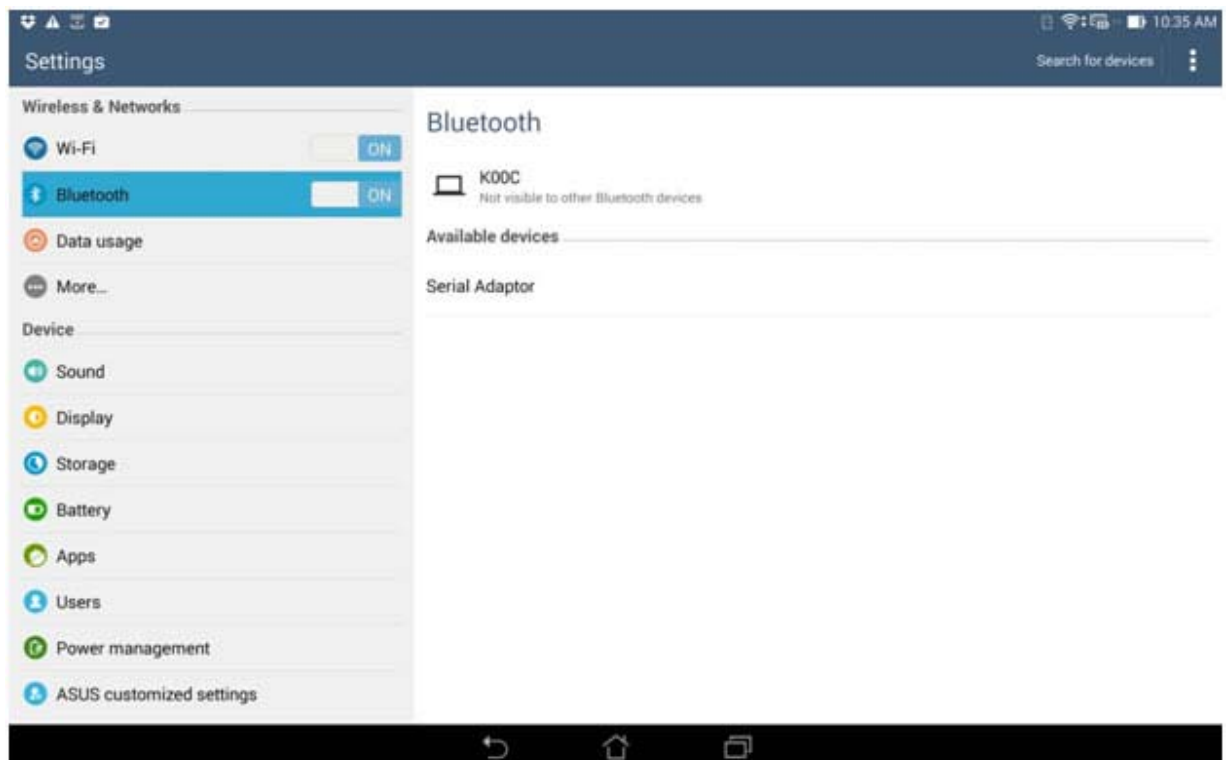
Removing the power supply to the adapter will however NOT erase your entered settings.

## Pairing the Bluetooth Adapter with your Android device

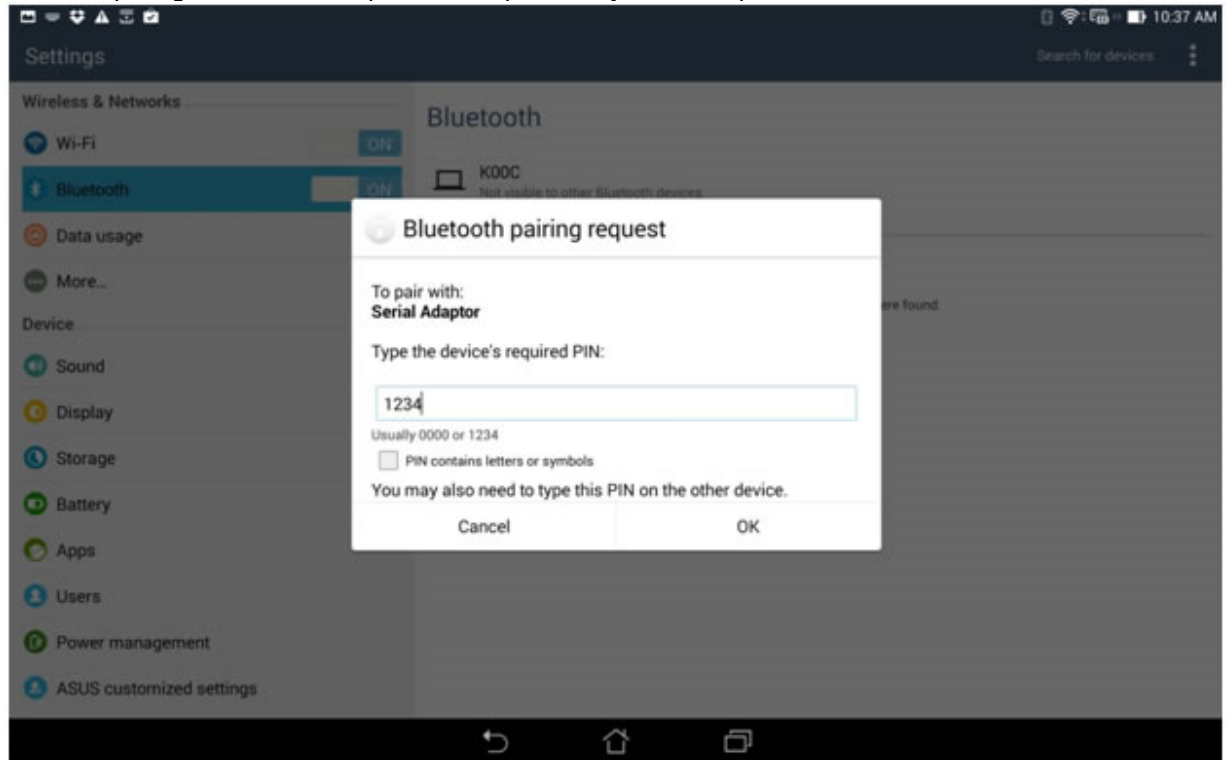
Depending on which tablet or phone you are using you may first need to manually turn on Bluetooth.

Some tablets/phones will automatically start searching for Bluetooth devices once you turn on Bluetooth, on others you will need to manually tap the “Search for devices” button.

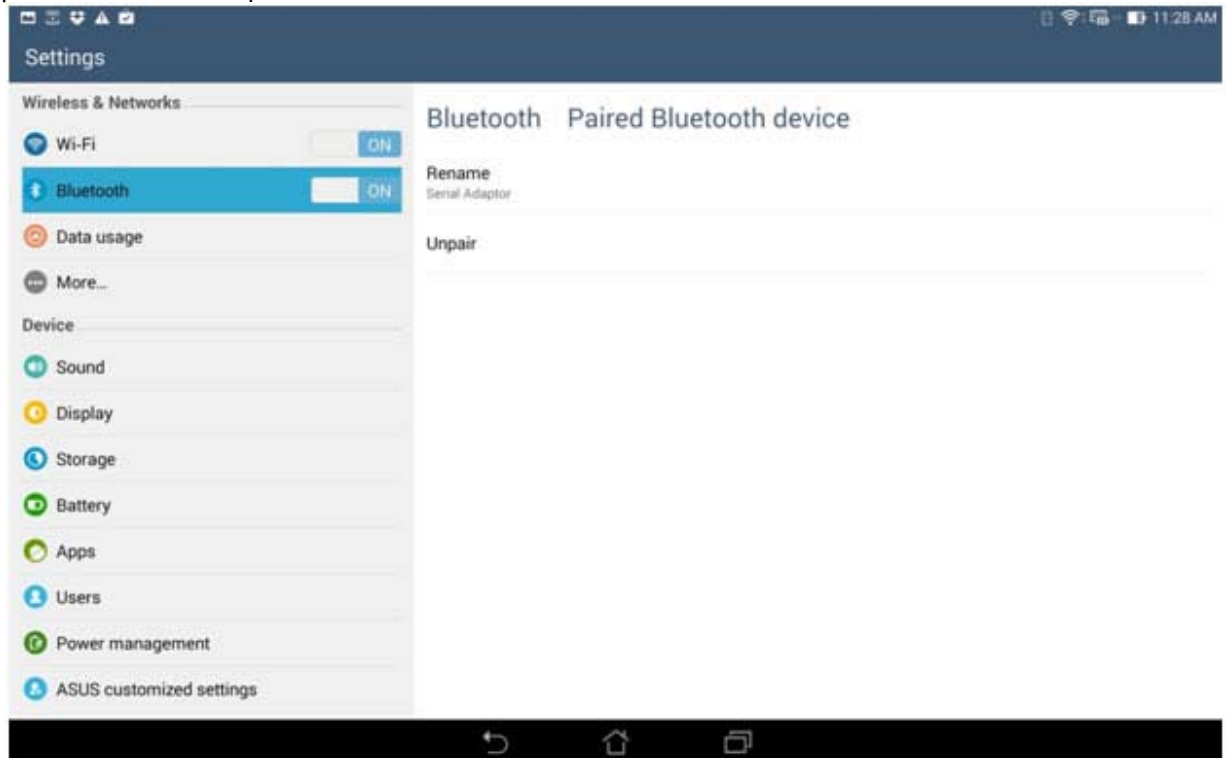
Click the “Serial Adaptor” to pair it once your tablet/phone has found it.



Enter the pairing code "1234" to pair the adapter with your tablet/phone:



Click the "Serial Adaptor" again once its paired. If it says "Unpair" the adapter is now successfully paired with the tablet/phone.



You are now ready to use the adapter with your Android app.

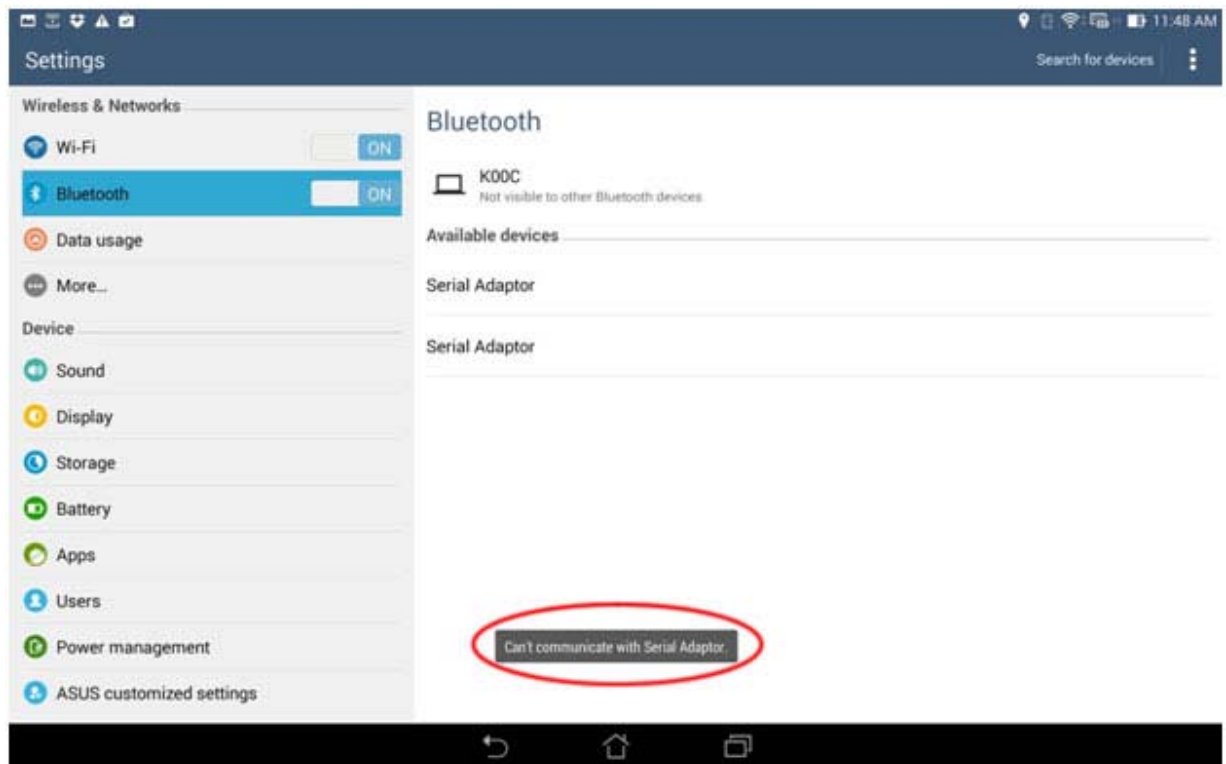
If you need a serial terminal program for testing then there is one available for free here:

[https://play.google.com/store/apps/details?id=com.ucconnect.ucbtadapter\\_hex&hl=en](https://play.google.com/store/apps/details?id=com.ucconnect.ucbtadapter_hex&hl=en)

### Connection problems with Android

#### **Problem: Android “Can’t communicate with Serial Adapter” error.**

It is well known that the current version of Android (KitKat 4.4.2) has Bluetooth communication problems; however the severity of this problem depends on which Android device you are using.



If you are getting a “Can’t communicate with Serial Adapter” error from Android, try the following:

1. Make sure your Android can find only one adapter. If two adapters are listed, remove one adapter by turning off Bluetooth, turn it on again and search for Bluetooth devices.
2. Unpair the adapter, turn off Bluetooth, turn on Bluetooth and search for Bluetooth devices.
3. Unpair the adapter, turn off Bluetooth, reset the serial Bluetooth adapter (you will need to set the baud rate to 9600bps again), turn on Bluetooth and search for Bluetooth devices.

Unfortunately there is currently no known way of completely solving this problem, except hoping that Google will fix this problem in the next Android update.



## Questions & Answers

**Q: I cannot communicate with my S2B2232I/E, why?**

**A:** Here are several things you can try:

1. Try and swap the TX and RX wires between the S2B2232I/E and the remote device it is connected to by using a null modem adapter. This is required if the serial device you are connecting to is configured as a DTE device.
2. If you are using a null modem cable to connect your computer to the remote device then the switch on the S2B2232I/E connected to your computer must be in the position towards the DB9 connector. The S2B2232I/E connected to your remote device must also be in the position towards the DB9 connector.
3. If you are using a straight through cable to connect your computer to the remote device then the switch on the S2B2232I/E connected to the computer must be toward the DB9 connector. The switch on the S2B2232I/E connected to the remote device must be towards the antenna.
4. Reset the adapter(s) to factory settings by pressing the reset button and start over.
5. Disable the Echo and status messages. This can be done with the ECHO=N and PROMPT=N commands.
6. Disable flow control on both S2B2232I/E's (FLOW=N)
7. Loop-back RTS to CTS (Pin 7 to Pin 8) on the remote connector if possible.
8. Your device may need a DSR/DTR signal. Some devices require a signal on both CTS and DSR. The S2B2232I/E simply loop-back DTR to DSR. If your device requires a DSR signal but does not provide a DTR signal then the DSR signal will be missing. Looping-back the wires as shown below will solve this problem. Generally hardware flow control should be disabled on the S2B2232I/E when this loop-back is used.

Adapter Side	Equipment Side
Pin 2 (RxD)	Pin2 (RxD)
Pin 3 (RxD)	Pin3 (RxD)
Pin5 (GND)	Pin5 (GND)
Pin7 (RTS)	Pin4 (DTR) Pin7 (RTS)
Pin8 (CTS)	Pin6 (DSR) Pin8 (CTS)

**Q: When entering the command ATF? it returns an error when trying to search for Bluetooth devices in range.**

**A:** In order to have the S2B2232I/E display Bluetooth devices in range it must be in Master mode, and must not be in auto-connect mode.

---

**Q: How do I configure the S2B2232I/E for 7 data bits, 1 stop bit and even parity?**

**A:** The adapter itself cannot be set to 7 data bits however by setting the parity bit of your **software (local computer side) and serial device (remote adapter side)** to either **SPACE, NONE or MARK** the adapter can emulate 7-bit communication while its actually set to 8 bit communication. This will work with most devices, however possibly not all.

This has been tested and confirmed working both with a paired "USB Bluetooth dongle to serial Bluetooth adapter" setup and a paired "serial Bluetooth adapter to serial Bluetooth adapter" setup.

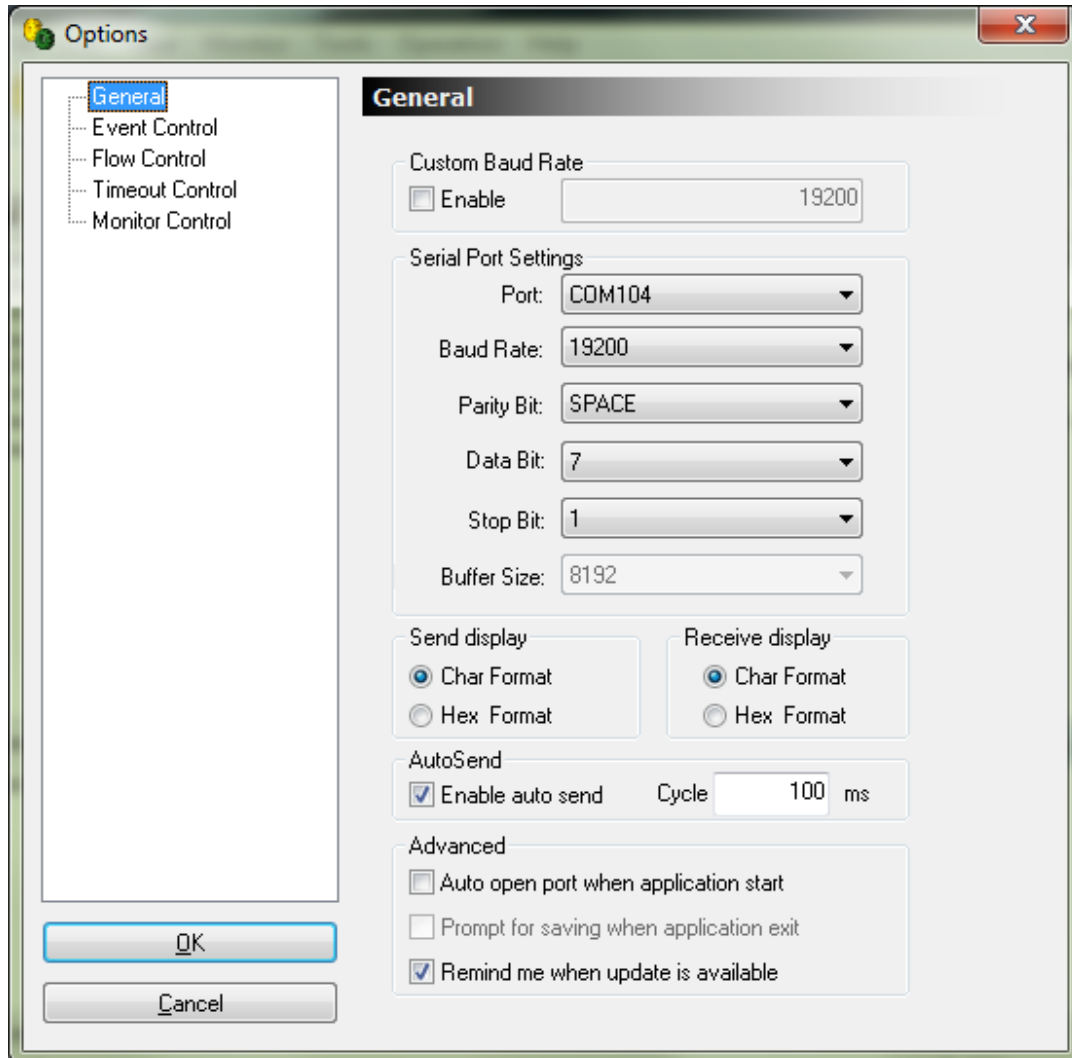
Alternatively, if your serial device and/or control software is set to 7 bits (and cannot be set to 8 bits which the adapter is using), you may be able to set your serial device and/or control software to 8 bits and the parity bit to EVEN, which in will simulate 8 bits. This solution will work with many serial devices.

Please see Example setup below:



Depending on your serial device you need to set the parity bit of your **control software and/or serial device (not the adapter)** to either Space, None or Mark, you will need to simply try all 3 to find out which works best with your particular serial device.

Example settings when using AccessPort terminal software with 7 bit communication at the computer side:



**Q: How is DTR/DSR signals (pins 4 & 6) handled by the S2B2232I/E?**

**A:** The DTR signal is rarely used in most serial devices and even if it is used it is often not actually required by the application. This is why the S2B2232I/E has looped back the DTR / DSR signal, pin 4 looped to pin 6. By doing this, if the device asserts DTR indicating it will read an asserting DSR. For devices that require an asserting DSR but are not asserting DTR the DSR signal (pin 6) can be shorted to RTS (pin 7).

Q: How can I keep the COM port open at all times? I have created a link using a USB Bluetooth dongle and a S2B2232I and it appears as the COM port does not open until my application software tries to connect to my serial device.

A: When creating a link with a USB Bluetooth dongle or built-in Bluetooth the S2B2232I/E will be the Slave and the USB Bluetooth dongle (or built-in Bluetooth) in the PC will be the Master. The Master or the application at the Master will control the Slave. This is cannot be changed since this is how the Bluetooth SPP works.

To keep a port open at all times you can instead create a link using two S2B2232I/E's, this will create a Master and a Slave S2B2232I/E which will work independent from the PC thereby keeping the port open at all times.

---

Q: I found that the S2B2232I/E generates a connect and disconnect string upon changes in Bluetooth state as following: CONNECT : C485 08 177441 DISCONNECT : C485 08 177441. This string causes my serial device (a telescope) to enter into a bad state which requires a power cycle to recover from. Would it be possible to avoid generating the character string?

A: Yes, please refer to the 'PROMPT=N' command. This parameter is by default set to "Y", if you change it to "N" then the character strings will no longer be present and no longer cause problems with your serial device.

---

Q: Does the S2B2232I/E work with iPhone/iPad/iPods?

A: The iPhone/iPad/iPods does not support the SPP (Serial Port Profile) so currently the S2B2232I/E does not work with iPhone/iPad/iPods.

Bluetooth V4.0 has support for newer versions of smart phones with iOS. Older versions of iOS is not compatible with Bluetooth V4.0.

---

**Q: Can you provide an Example of how to setup a Master and slave adapter to auto-connect?**

A: Example for setting up Master/Slave auto-connect.

1. Give the Slave adapter a PIN code by using the PIN=XXXX command. For Example PIN=1111.
2. Setup the Master adapter with the following settings:  
ROLE=M  
PIN= "your password for pairing"  
RECONNECT=Y  
AUTO=Y
3. Let the Master and Slave adapters search, pair and link automatically.
4. If you have multiple slaves at the same location then you can set the DISCOVER=N command for the slave adapter(s) you don't want the master to link with.

If you need more than one pair of Master/Slave adapters at the same location, you will need to specify a different PIN code for each pair.

---

**Q: The linked adapter(s) sometimes loose the link and needs to be restarted to link again. What is the problem?**

A: The most likely problem is insufficient power supply to the adapter. If the amperage is marginal then the adapter will become unstable.

If the adapter for Example is powered by a USB hub with multiple other USB devices connected to the hub then the adapter may not get the power it needs.

We recommend powering the adapter directly from a single USB port or a 110/230V to 5V 500mA power adapter supply.

---

**Q: The S2B2232I/E cannot pair with my computer's Bluetooth while it receives data on the DB9 serial RS232 port, why?**

A: The S2B2232I/E can pair and connect while receiving data on the RS232 DB9 port, however only limited.

The ability to pair and connect while receiving data on the RS232 DB9 port depends on the speed and size of the data being sent to the RS232 DB9 port. Our current tests has determined that 11 ASCII characters at a speed of 100ms at 9600bps is the maximum data which can be received on the RS232 DB9 port for the S2B2232I/E still being able to pair/connect over Bluetooth.

If the data speed is reduced the number of characters can be increased and vice versa.

## Known issues

When using the S2B2232I/E with SkySafari telescope software the “Echo” and system status messages must be disabled for proper communication. These can be disabled with the commands:

ECHO=N  
PROMPT=N